



24
SEPTEMBER
2022

EMBRACING DIGITAL TECHNOLOGY IN THE BUILT ENVIRONMENT

TIME : 09.00 - 13.00

VENUE: VIRTUAL VIA ZOOM

Topic No. 2: Building Information Modelling (BIM) Adoption in Building Construction



Organized by



Establish Member of



malaysiaGBC
Platinum Partner 2021/2022



malaysiaGBC
Silver Partner 2021/2022



Presented by

PLYTEC *engineering*

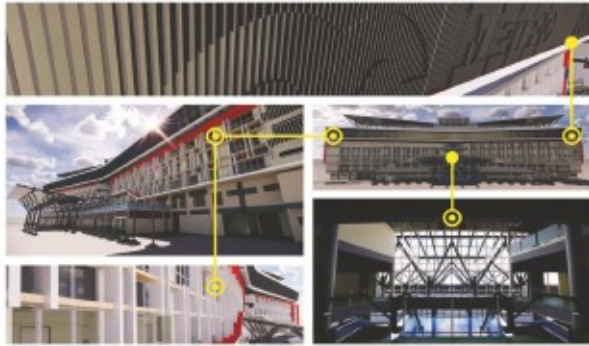
A Member of PLYTEC Group

Ir. SAMANTHA LAU

Engineering Manager, Engineering Services Division
BIM Engineering Solution & Technology Sdn Bhd

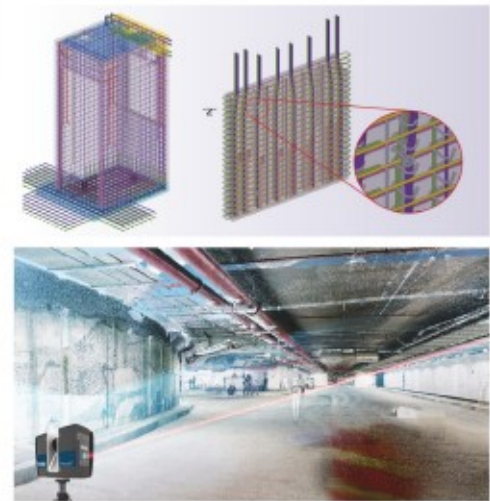


ISO 19650-1&-2:2018
Certified



Virtual Design & Construction (VDC)

connect all stakeholders to deliver better outcomes



PLYTEC engineering
A Member of PLYTEC Group

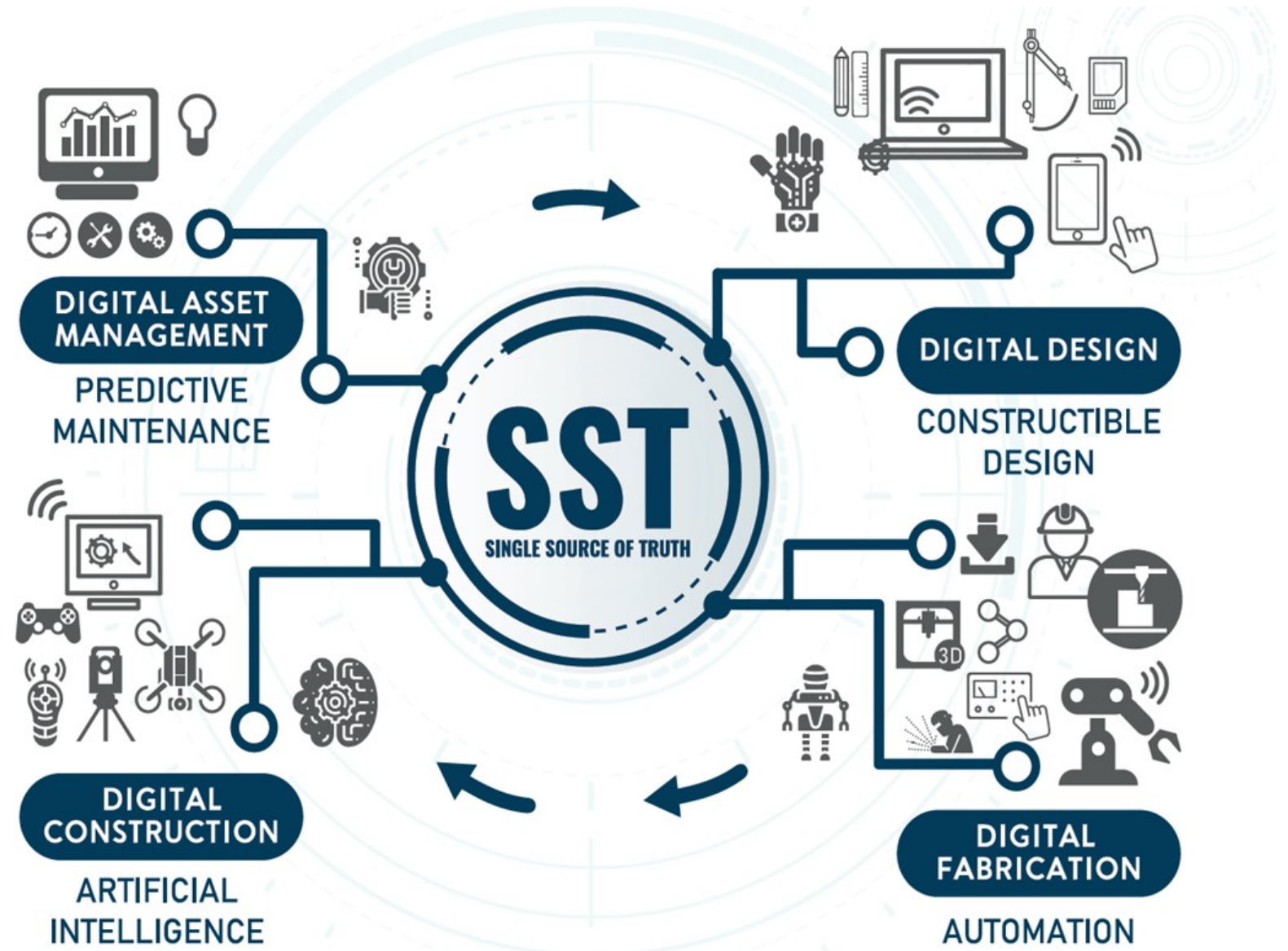
Virtual Design & Construction (VDC)



BUILD SMARTER. BUILD FASTER.

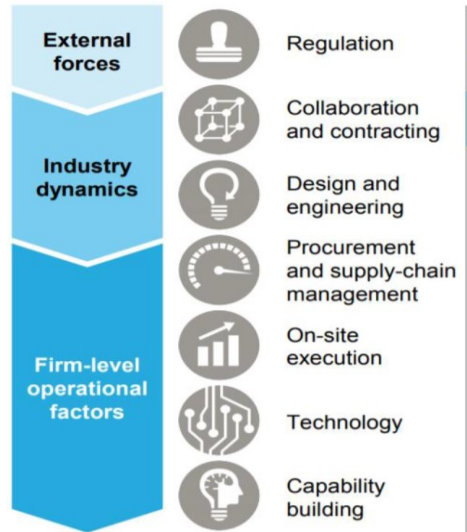
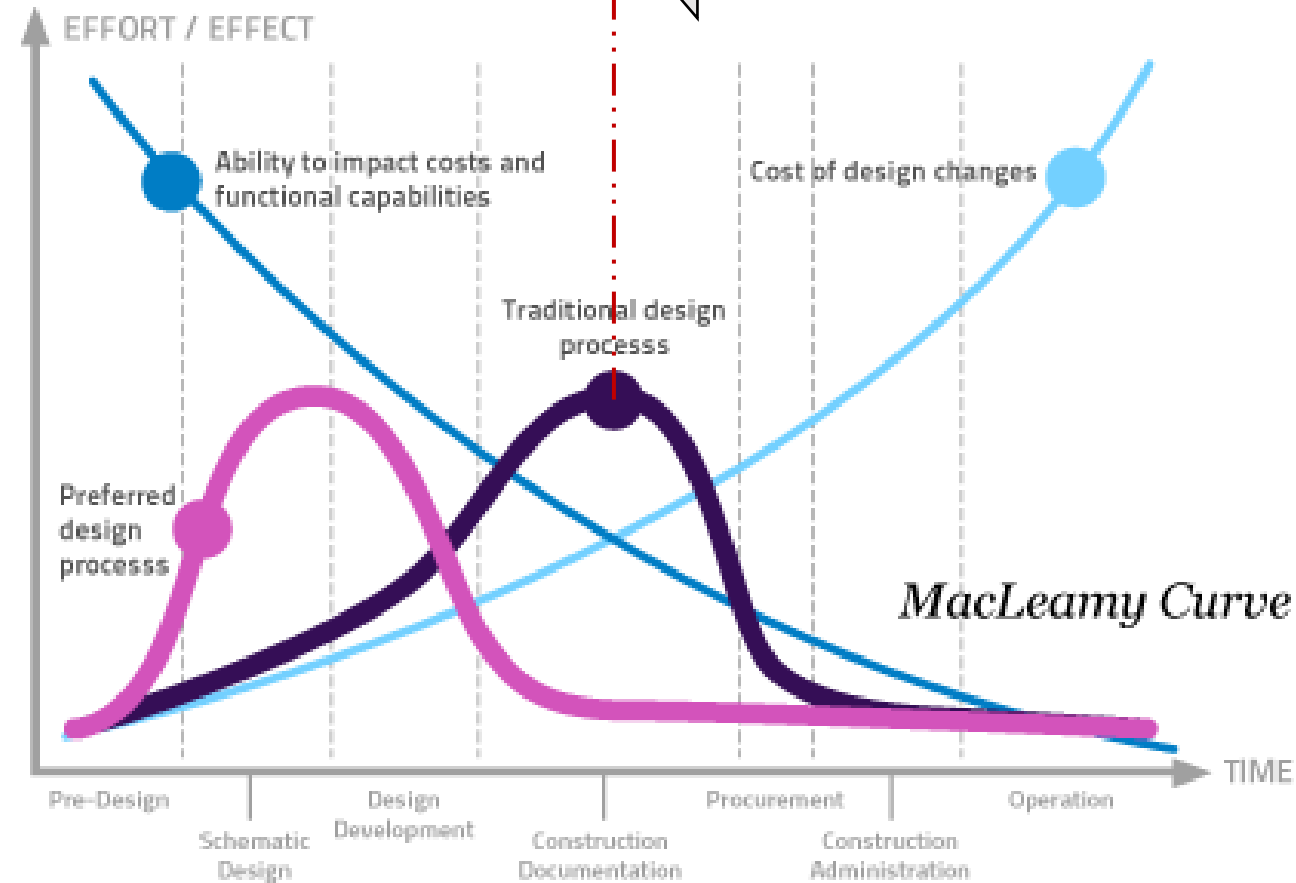
BACKGROUND

“ We listen to your business operation needs, We streamline work processes and connecting stakeholders through digital data, innovation, technology across project life cycle from planning, design, construction, fabrication to facilities management to deliver better outcomes for end users ”

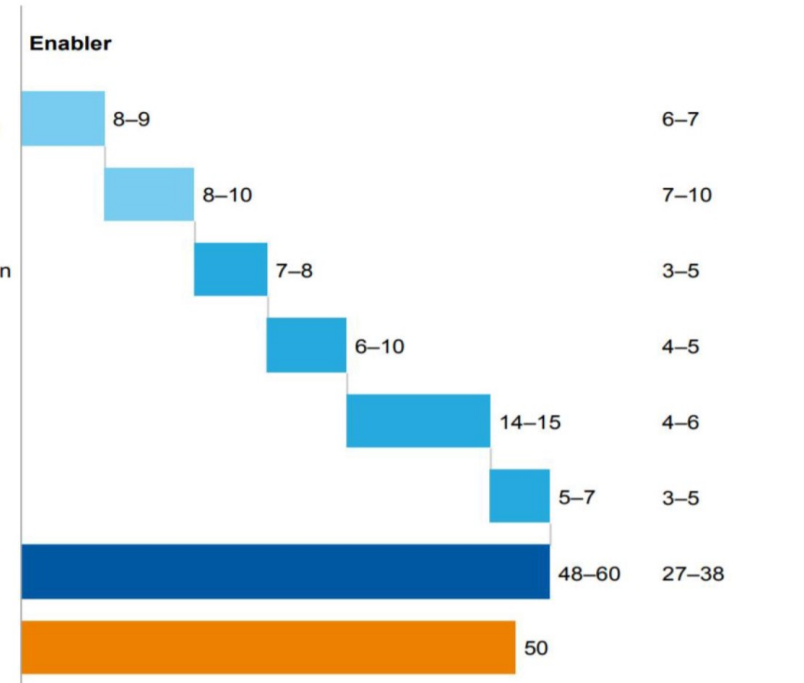


Why Digital Transformation?

Paradigm Shift



Potential global productivity improvement from implementation of best practices¹
Impact on productivity (%)²



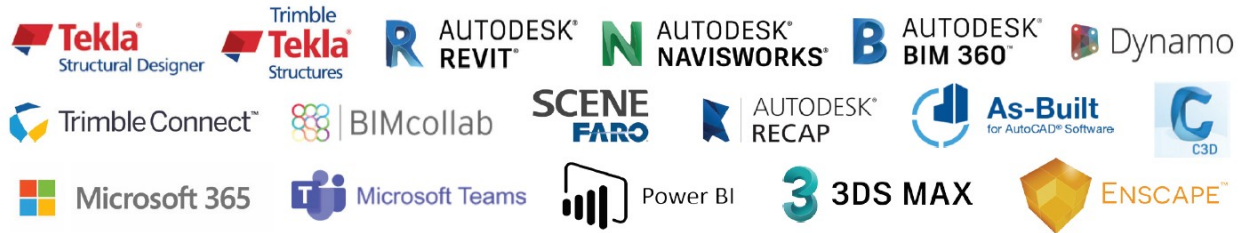
¹ The impact numbers have been scaled down from a best case project number to reflect current levels of adoption and applicability across projects, based on respondents to the MGI Construction Productivity Survey who responded "agree" or "strongly agree" to the questions around implementation of the solutions.
² Range reflects expected difference in impact between emerging and developed markets.

SOURCE: McKinsey Global Institute analysis

OUR SOLUTIONS

OUR ENGINES

We deploy diverse digital solutions and technologies. Only by harvesting the strength of each unique digital software and technology, we can design, collaborate and build a constructible virtual asset that is comprehensibly visible and reflecting the actual built asset.



Malaysia
Puchong HQ

Malaysia
Johor-SG branch

Philippines
Branch

OPEN BIM™



IFC 2x3, IFC4



COBie 2.4



Aurel

a lifestyle for the golden years

PLYTEC *engineering*



Virtual Builder: BIM Engineering Solution & Technology Sdn Bhd

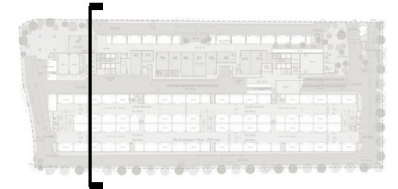
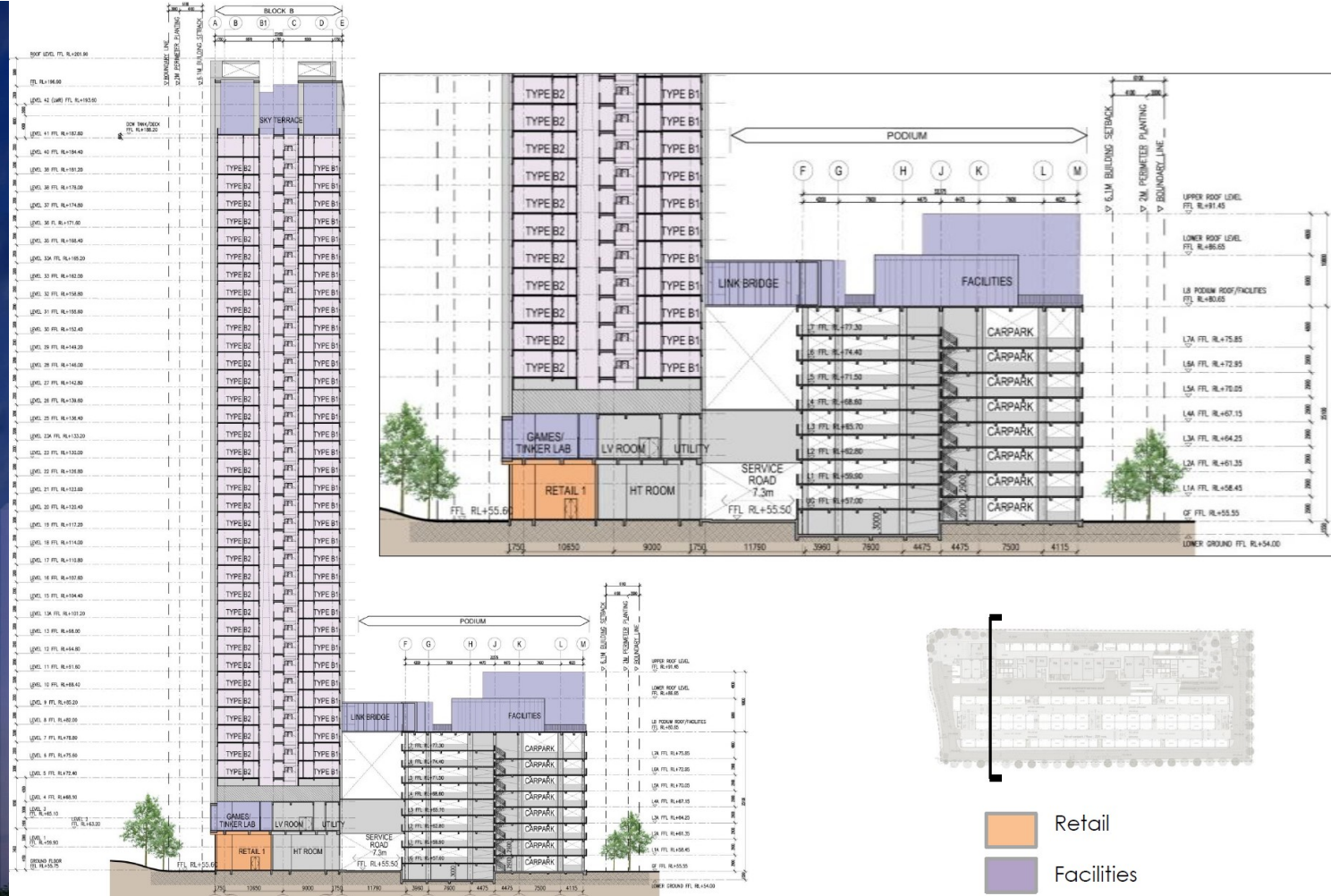
Actual Project - Residential

Project Status:

Construction Stage

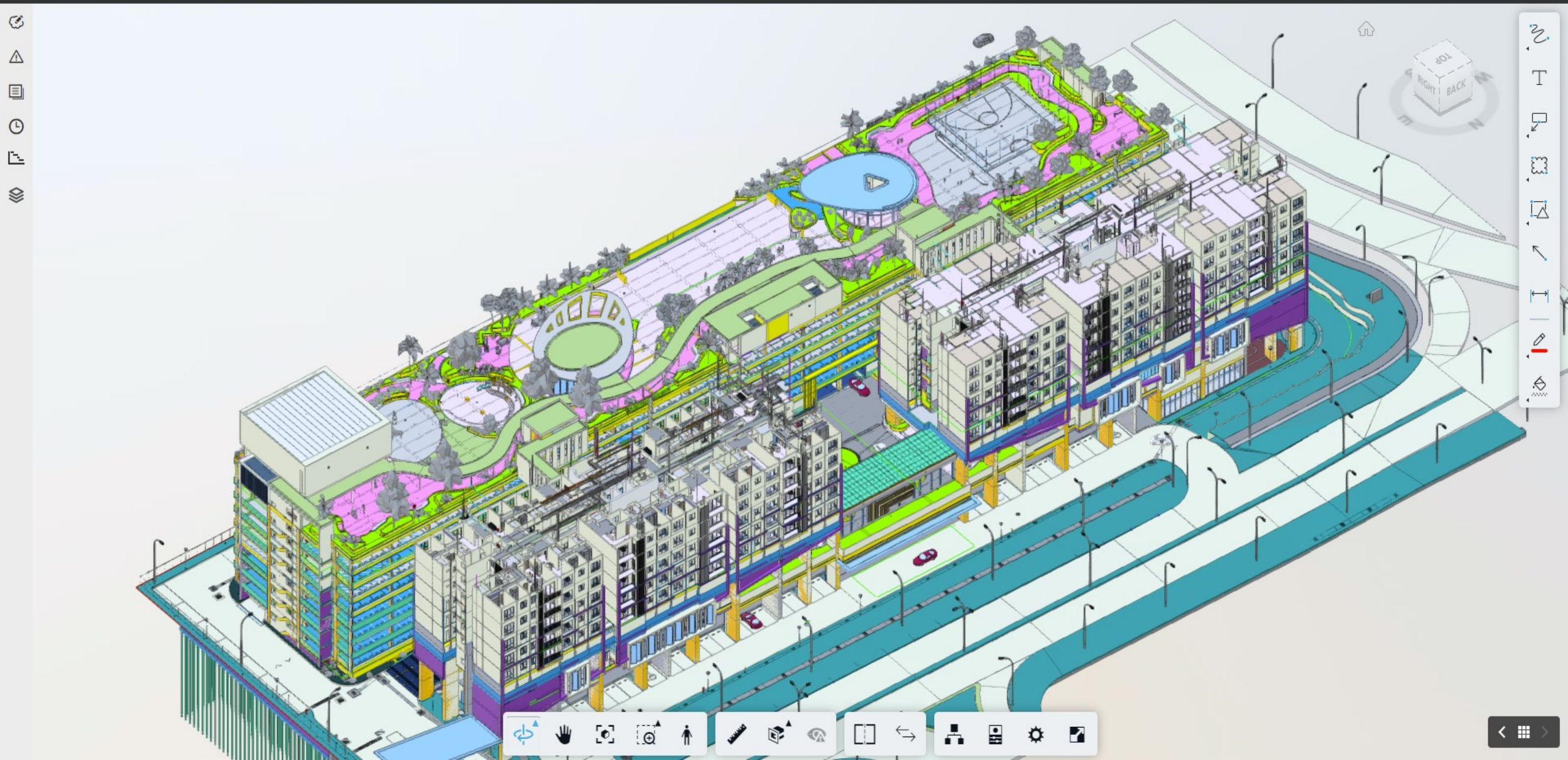
BIM S.O.W:

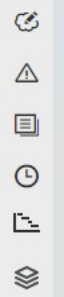
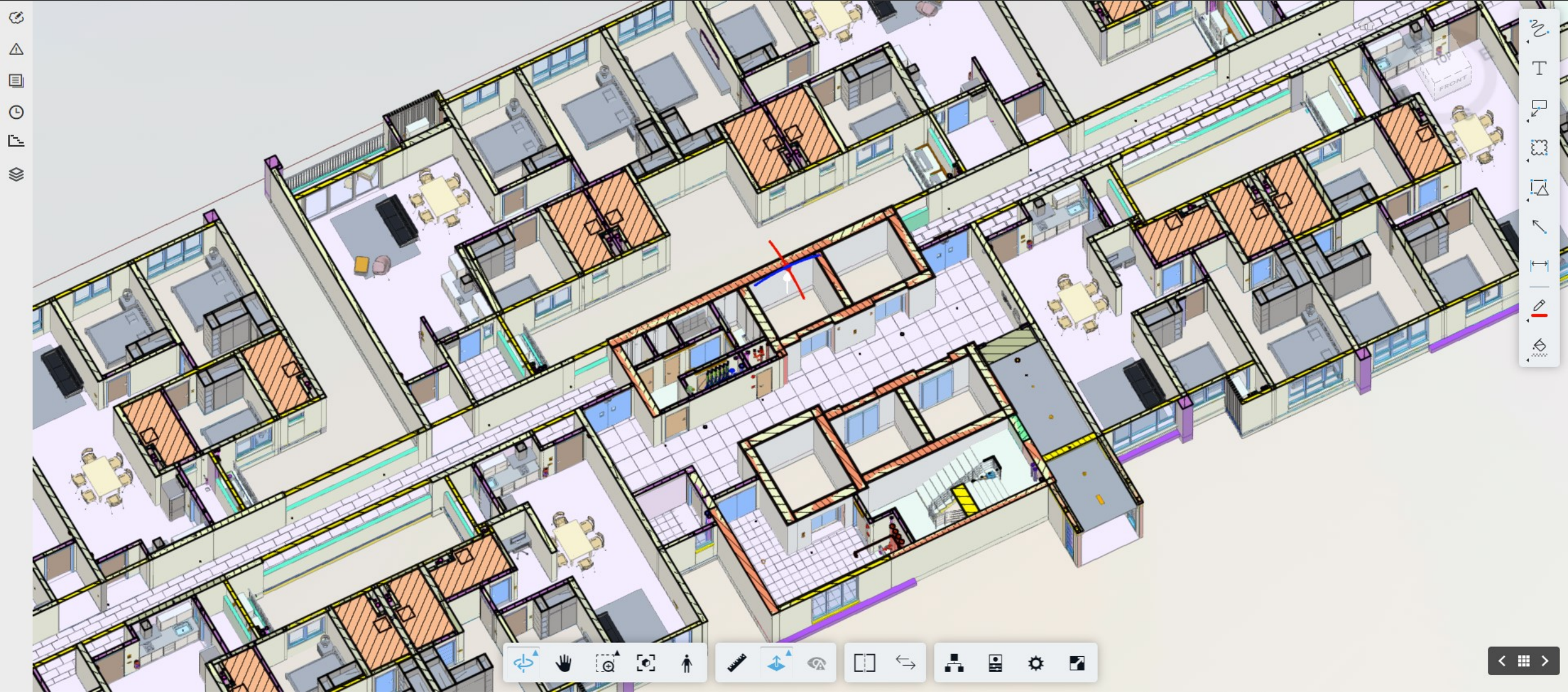
Project BIM Modelling
(LOD500) c/w Asset
Information Data



- Retail
- Facilities
- Serviced Apartment







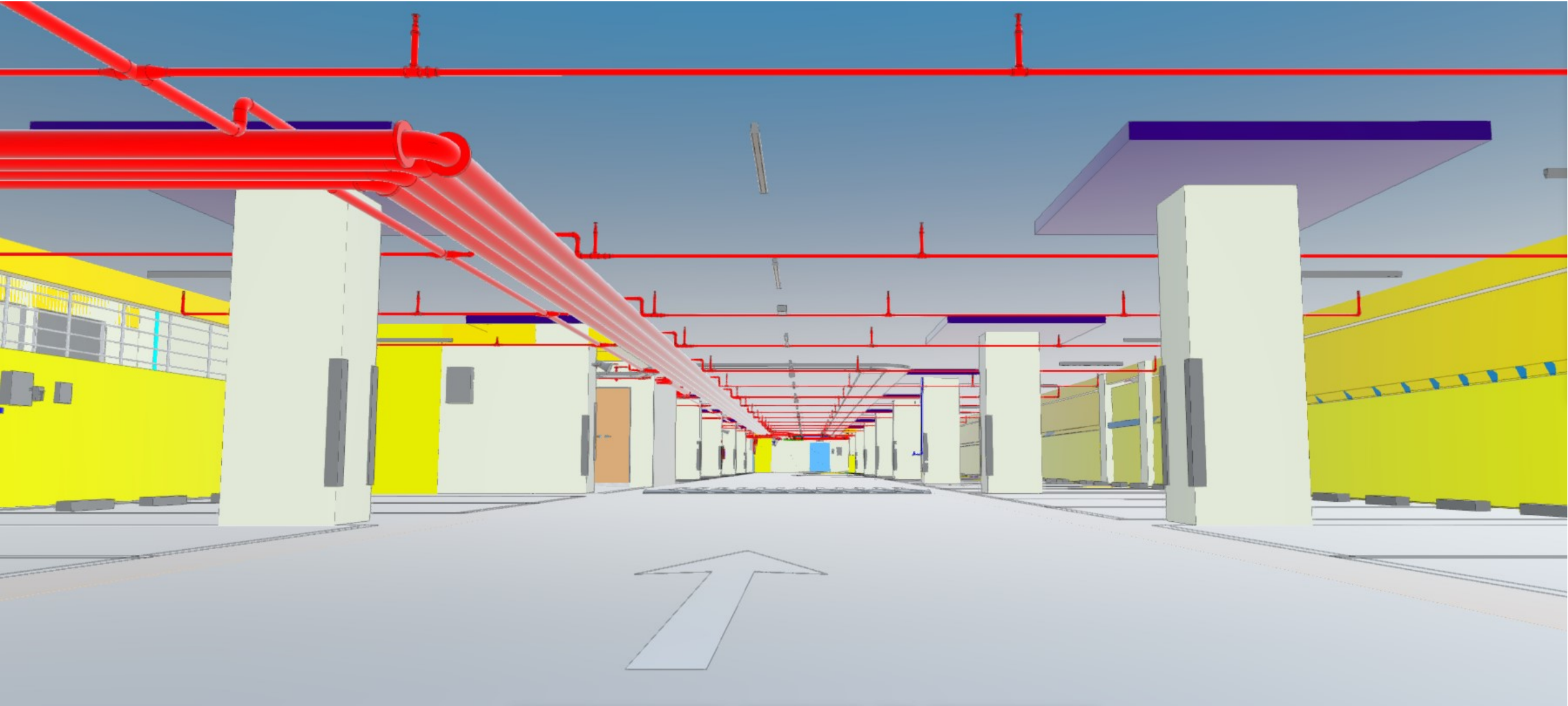
Actual Project - Residential

Project Status:

Construction Stage

BIM S.O.W:

Project BIM Modelling
(LOD500) c/w Asset
Information Data



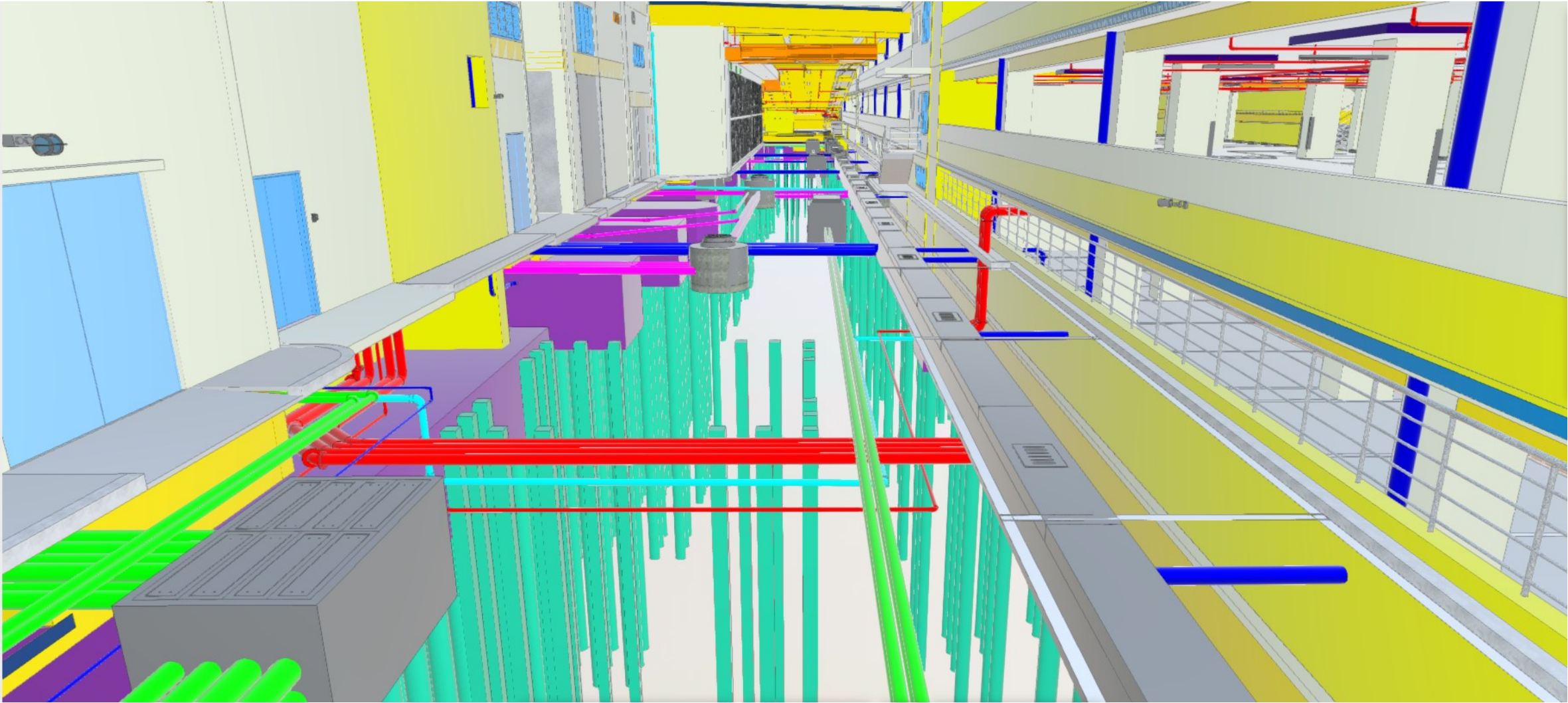
Actual Project - Residential

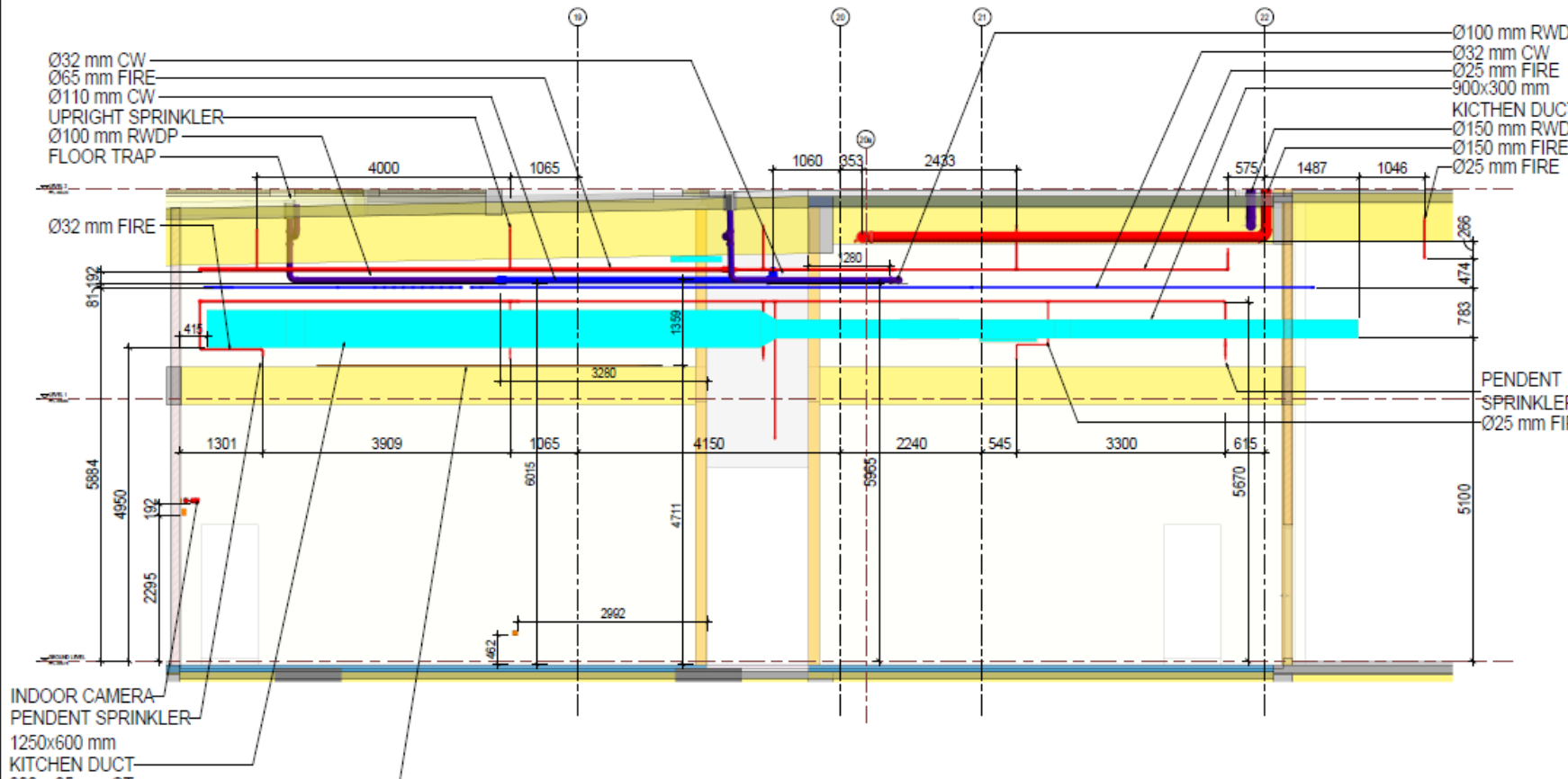
Project Status:

Construction Stage

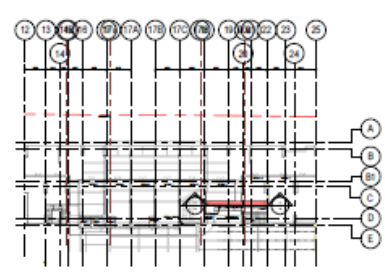
BIM S.O.W:

Project BIM Modelling
(LOD500) c/w Asset
Information Data





SECTION 6 VIEW
1:25



- ELECTRICAL LEGEND:**
- EMERGENCY LIGHT FLUORESCENT
 - GLS BULB HEAD
 - JUNCTION BOX WALL MOUNTED
 - EMERGENCY BREAK GLASS
 - KEY SWITCH
 - METAL CLAD
 - OUTDOOR CAMERA
 - CEILING MOUNTED SPEAKER
 - DOME CAMERA
 - WALL MOUNTED SPEAKER
 - WALL MOUNTED FLUORESCENT LIGHT
 - LED FLUORESCENT LIGHT
 - LED DOWN LIGHT (RECESSIBLE)
 - LED DOWN LIGHT (SURFACE)
 - POLE LIGHT
 - CABLE TRAY

- LEGEND**
- FIRE HYDRANT PIPE
 - ELECTRICAL EQUIPMENT
 - DOMESTIC COLD WATER
 - SANITARY PIPE (SMP / WP / VENT)
 - ACMV / MECHANICAL DUCT TRUNKING (ELECTRICAL)
 - COORDINATE DRAIN PIPE
 - REFRIGERANT PIPE
 - RWDP
 - DRAINAGE MANHOLE
 - TRASH / TELEVISION MANHOLE
 - TRASH / TVB MANHOLE
 - TRASH / TVB FEEDER
 - DRAINAGE MANHOLE
 - SEWAGE MANHOLE
 - FLOOR TRAP
 - GULLY TRAP

DRAWING APPROVAL STATUS

	(TICK)
A APPROVED	<input type="checkbox"/>
B APPROVED WITH COMMENTS	<input type="checkbox"/>
C REVISED / RESUBMIT / REJECTED	<input type="checkbox"/>

DRAWING APPROVAL STATUS

NAME	DATE	REVISION
DESIGN BY: MEVN	04/11/21	
CHECK BY: CYS	04/11/21	
DESIGN BY: MEVN	04/11/21	
SCALE: AS SHOWN	04/11/21	
DRAWING NO: OBC1418D/AVA-BEST-CSD-TW-GR1-000		REV/NO: 4

NAME / SIGN / STAMP: _____
DATE: _____

PROJECT TITLE:
CADANGAN PEMBANGUNAN 2 BLOK 4S TINGKAT PANGSAPURI SERVICE DAN 1 BLOK TEMPAT LETAK KERETA YANG MENGANDUNGI:

1) 4S BLOK A - 4S TINGKAT (4S UNIT)
2) BLOK B - 4S TINGKAT (4S UNIT)
3) 1 TINGKAT RUANG PERMAGAZIN DI ARAS TAMBAH (11 UNIT)
4) 1 TINGKAT KEMUDAHAN PENYUJUK DI TINGKAT 2

2) 4S BLOK TEMPAT LETAK KERETA DAN 1 TINGKAT SUB-BASEMEN
3) RUANG REKREASI DI ARAS BUMBUNG BLOK TEMPAT LETAK KERETA

DI ATAS LOT PT 28600 (PLOTS), MUJOM SATU, DAERAH KUALA LUMPUR, WILAYAH PERSEKUTUAN KUALA LUMPUR
UNTUK TETUAN MEGA LEGACY (M) SDN. BHD.

CLIENT:
MEGA LEGACY (M) SDN. BHD.
11, Jalan Puchong, 47100 Puchong, Selangor
Tel: 03-89221177 Fax: 03-89221178 Email: info@mlg.com.my

DESIGNED BY:
SAA SA ARCHITECTS SDN. BHD.
110, Jalan Puchong, 47100 Puchong, Selangor
Tel: 03-89221177 Fax: 03-89221178 Email: info@saa.com.my

STRUCTURAL & CIVIL ENGINEER:
DR. YO TAN JURUTERA PERENCANA SDN. BHD.
111, Jalan Puchong, 47100 Puchong, Selangor
Tel: 03-89221177 Fax: 03-89221178 Email: info@yo.com.my

MECHANICAL & ELECTRICAL ENGINEER:
PAC & RAKAN-RAKAN SDN. BHD.
11, Jalan Puchong, 47100 Puchong, Selangor
Tel: 03-89221177 Fax: 03-89221178 Email: info@pac.com.my

QUANTITY SURVEYOR (GENERAL BUILDING) SDN. BHD.
KPK
111, Jalan Puchong, 47100 Puchong, Selangor
Tel: 03-89221177 Fax: 03-89221178 Email: info@kpk.com.my

MECHANICAL ENGINEER:
WAA DESIGN SDN. BHD.
11, Jalan Puchong, 47100 Puchong, Selangor
Tel: 03-89221177 Fax: 03-89221178 Email: info@waa.com.my

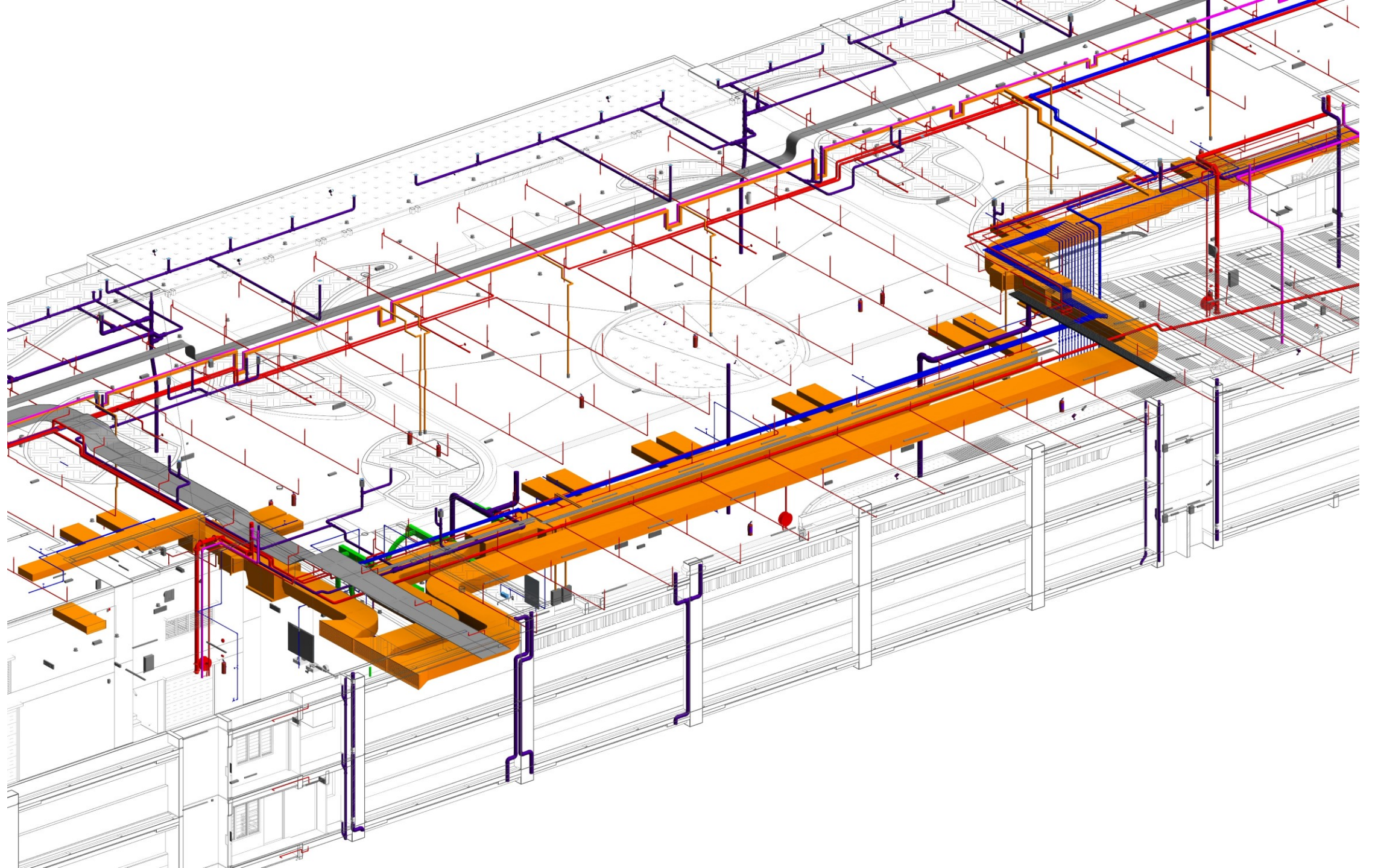
GEOTECHNICAL CONSULTANT:
GEP GEO TECHNICS SDN. BHD.
11, Jalan Puchong, 47100 Puchong, Selangor
Tel: 03-89221177 Fax: 03-89221178 Email: info@gep.com.my

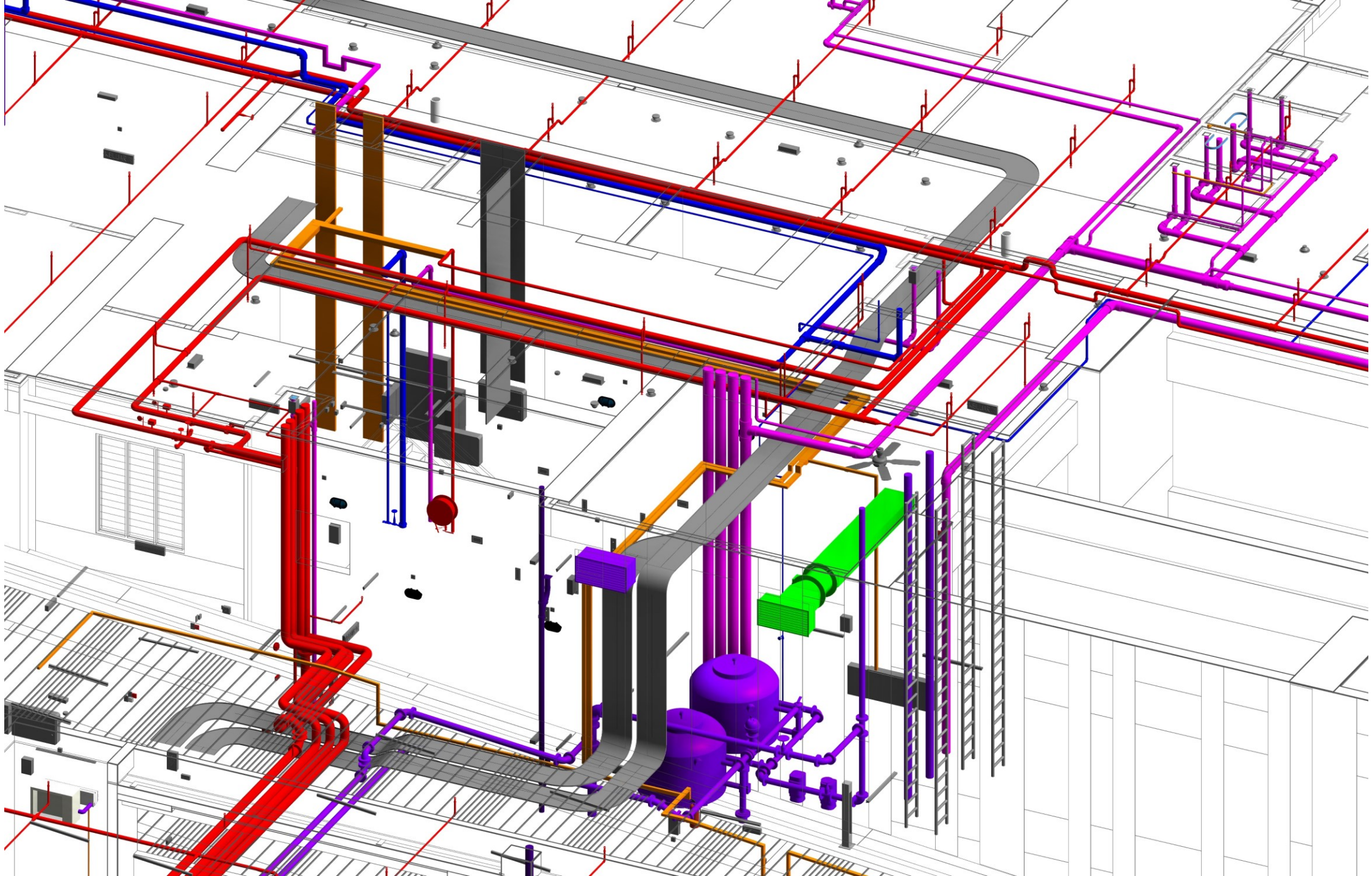
ARCHITECT:
METRIC GLOBAL SDN. BHD.
11, Jalan Puchong, 47100 Puchong, Selangor
Tel: 03-89221177 Fax: 03-89221178 Email: info@metric.com.my

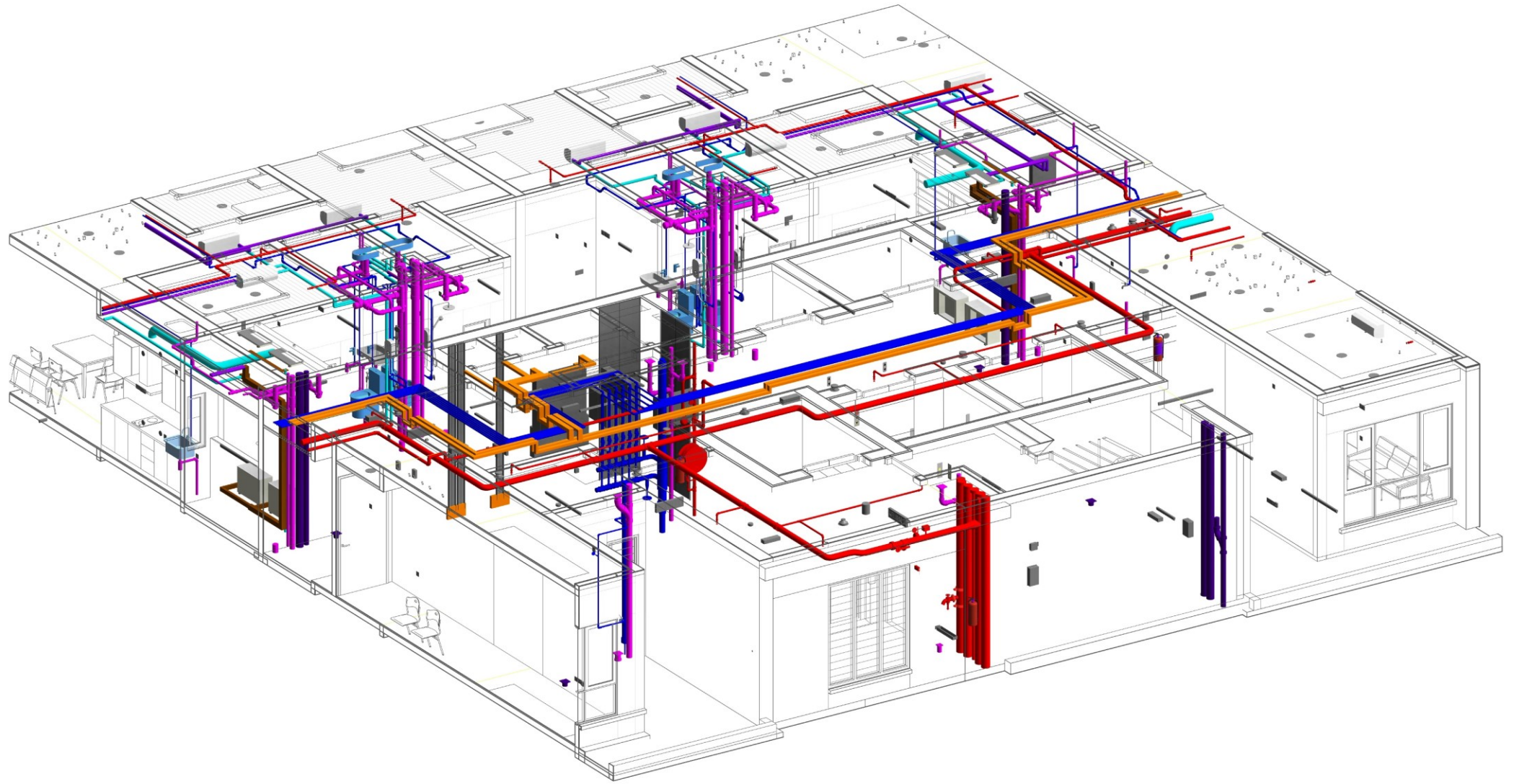
CONTRACTOR:
ORANGSEAM CONSTRUCTION
11, Jalan Puchong, 47100 Puchong, Selangor
Tel: 03-89221177 Fax: 03-89221178 Email: info@orangseam.com.my

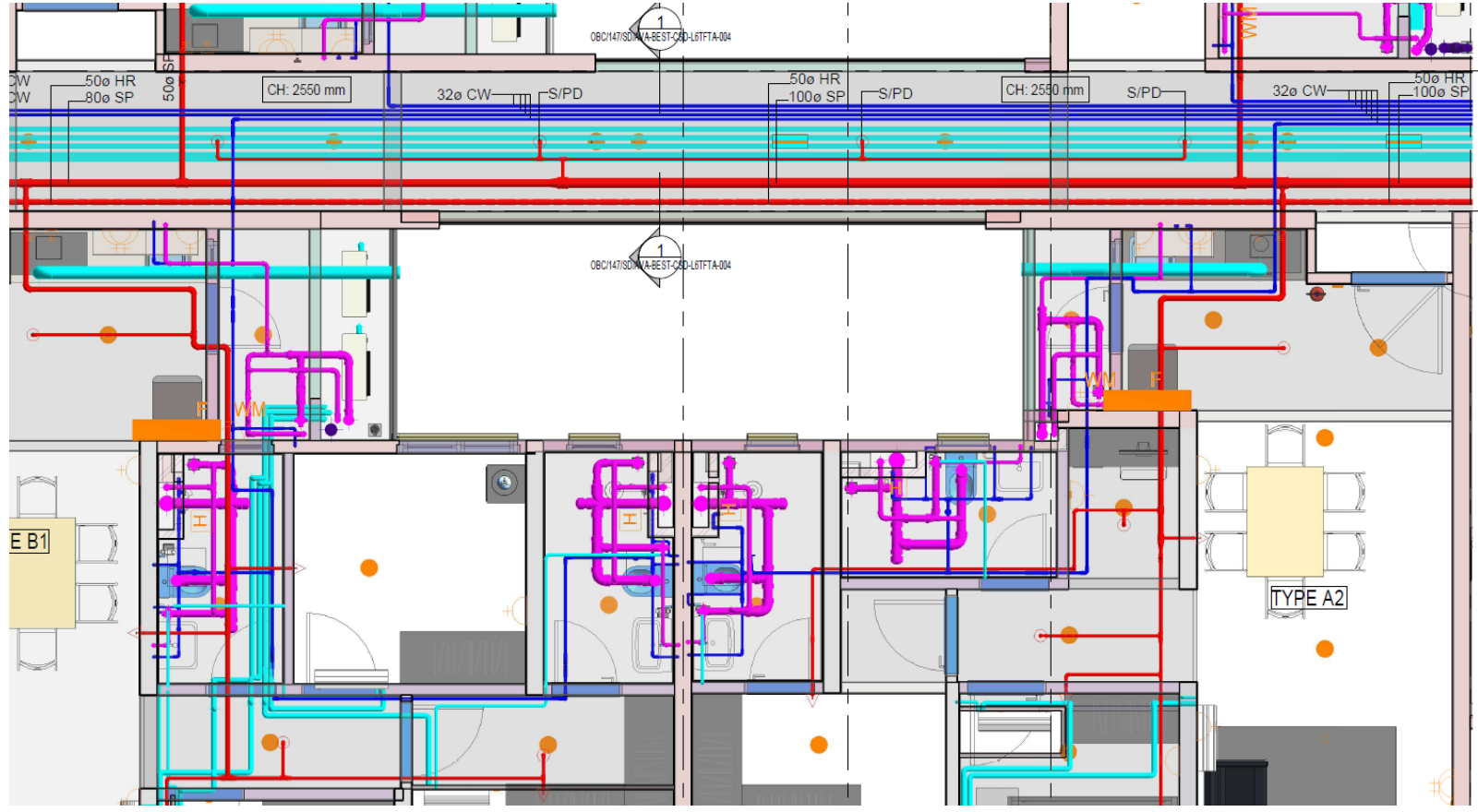
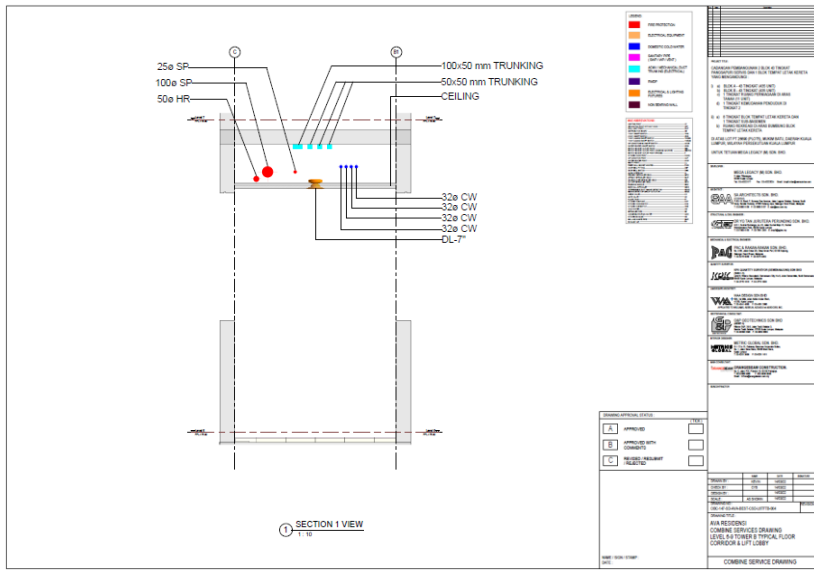
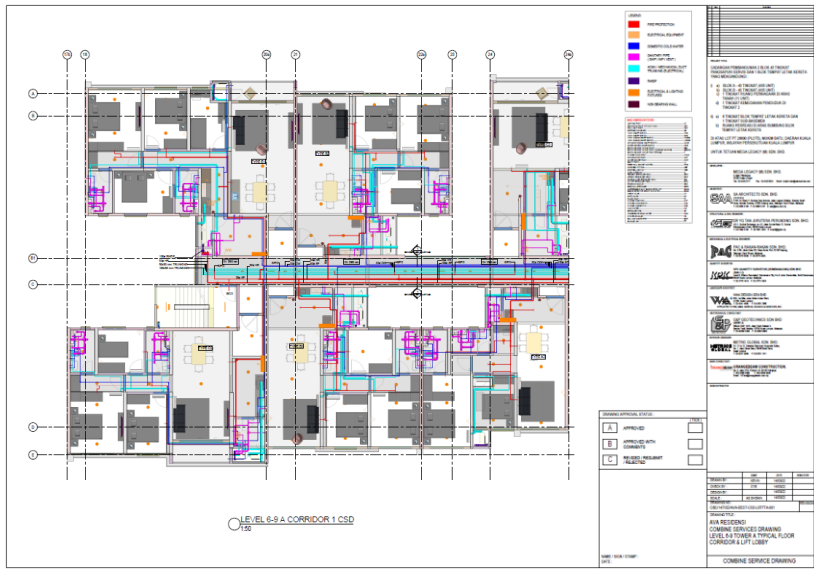
CONTRACTOR:
ORANGSEAM CONSTRUCTION
11, Jalan Puchong, 47100 Puchong, Selangor
Tel: 03-89221177 Fax: 03-89221178 Email: info@orangseam.com.my

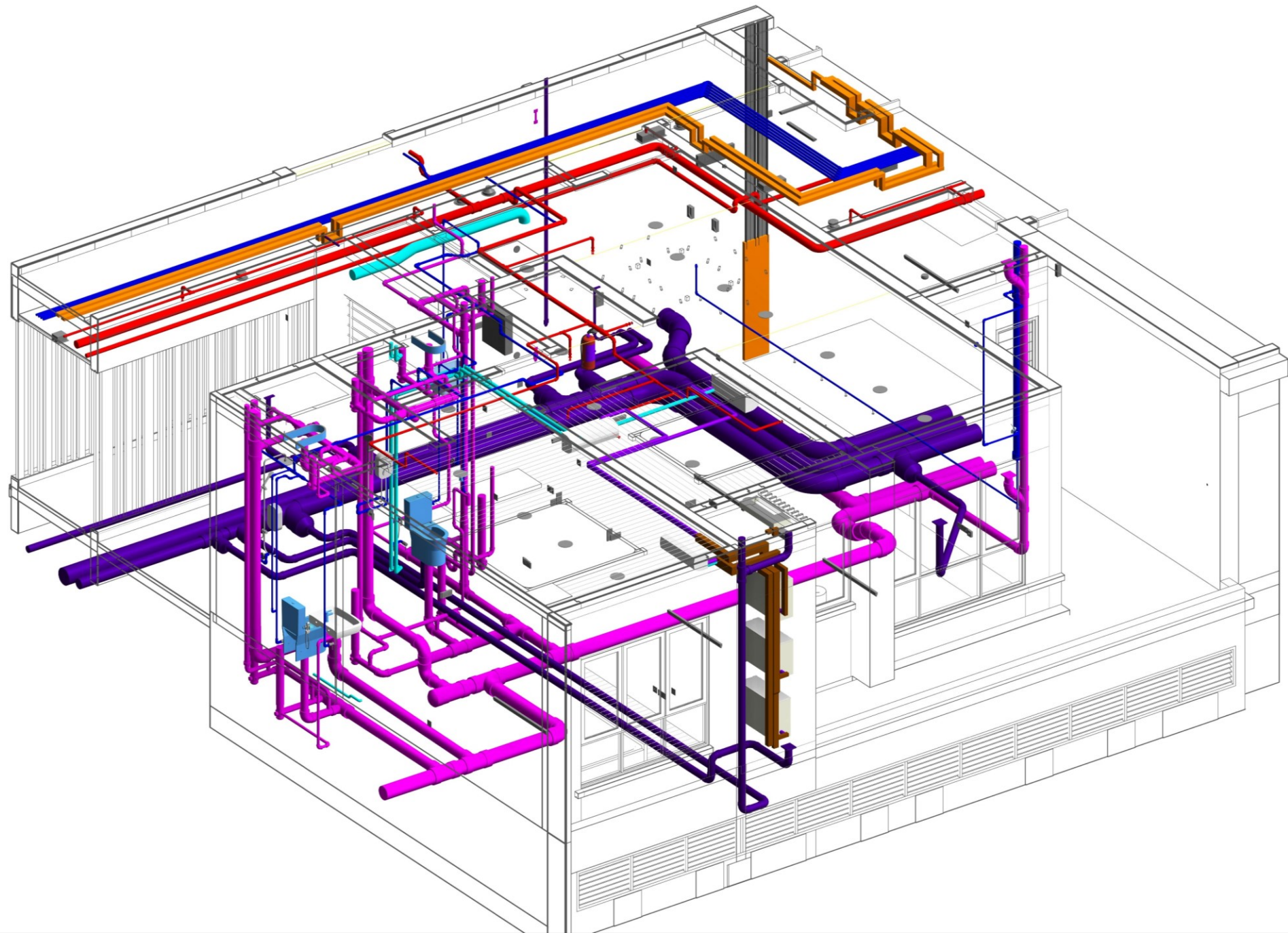
DRAWING TITLE:
AVA RESIDENDI
COMBINE SERVICES DRAWING
TOWER A & B
GROUND FLOOR AND LEVEL 1
SERVICES
COMBINE SERVICE DRAWING







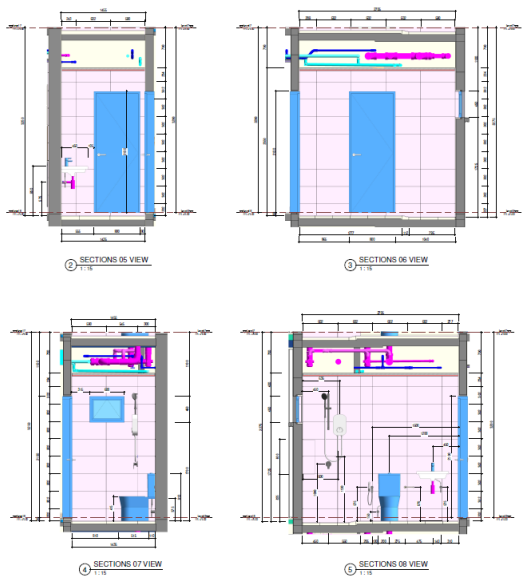






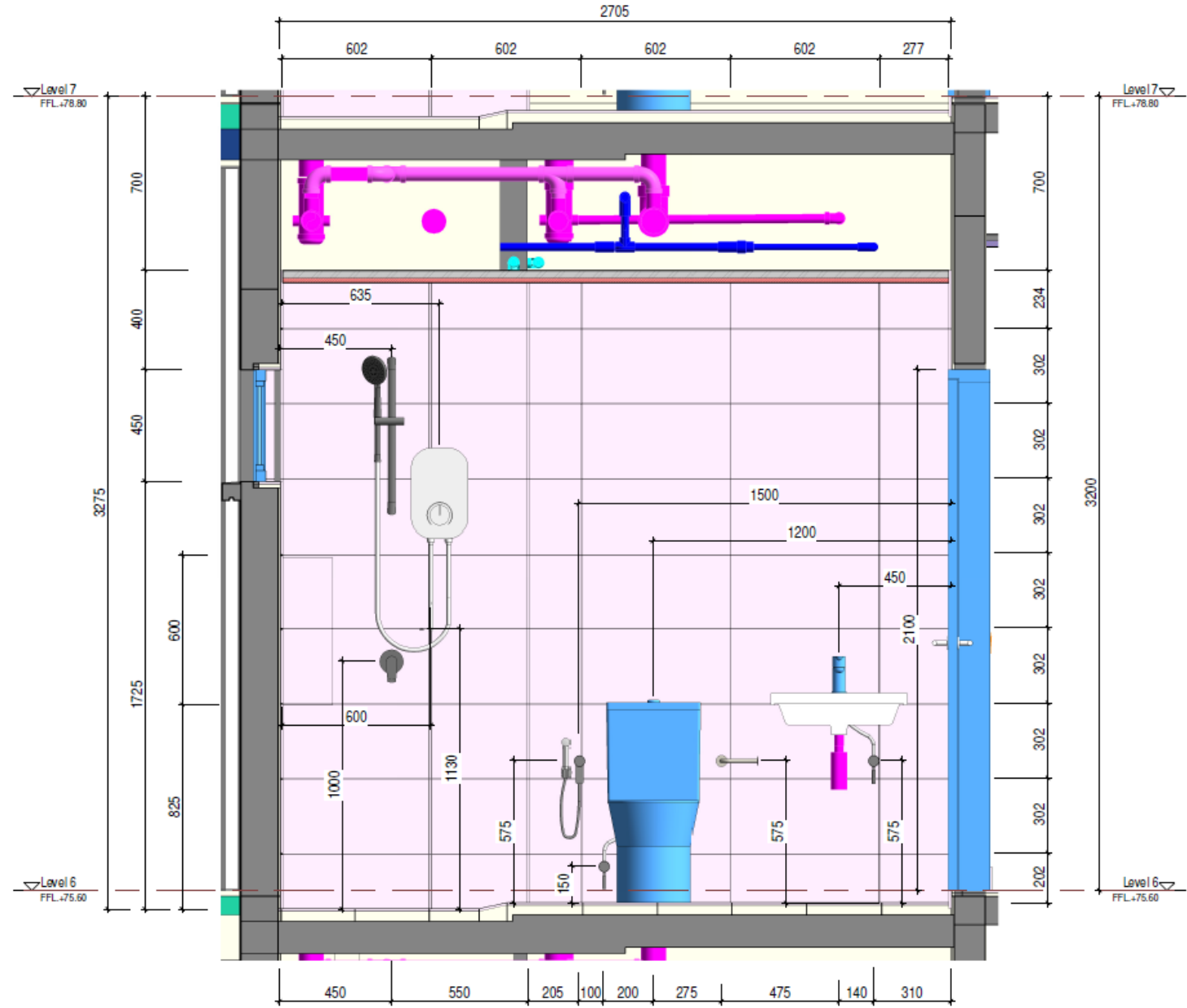
NO.	REVISION	DESCRIPTION
1	ADD	REVISION
2	ADD	REVISION
3	ADD	REVISION
4	ADD	REVISION
5	ADD	REVISION
6	ADD	REVISION
7	ADD	REVISION
8	ADD	REVISION
9	ADD	REVISION
10	ADD	REVISION
11	ADD	REVISION
12	ADD	REVISION
13	ADD	REVISION
14	ADD	REVISION
15	ADD	REVISION
16	ADD	REVISION
17	ADD	REVISION
18	ADD	REVISION
19	ADD	REVISION
20	ADD	REVISION
21	ADD	REVISION
22	ADD	REVISION
23	ADD	REVISION
24	ADD	REVISION
25	ADD	REVISION
26	ADD	REVISION
27	ADD	REVISION
28	ADD	REVISION
29	ADD	REVISION
30	ADD	REVISION
31	ADD	REVISION
32	ADD	REVISION
33	ADD	REVISION
34	ADD	REVISION
35	ADD	REVISION
36	ADD	REVISION
37	ADD	REVISION
38	ADD	REVISION
39	ADD	REVISION
40	ADD	REVISION
41	ADD	REVISION
42	ADD	REVISION
43	ADD	REVISION
44	ADD	REVISION
45	ADD	REVISION
46	ADD	REVISION
47	ADD	REVISION
48	ADD	REVISION
49	ADD	REVISION
50	ADD	REVISION
51	ADD	REVISION
52	ADD	REVISION
53	ADD	REVISION
54	ADD	REVISION
55	ADD	REVISION
56	ADD	REVISION
57	ADD	REVISION
58	ADD	REVISION
59	ADD	REVISION
60	ADD	REVISION
61	ADD	REVISION
62	ADD	REVISION
63	ADD	REVISION
64	ADD	REVISION
65	ADD	REVISION
66	ADD	REVISION
67	ADD	REVISION
68	ADD	REVISION
69	ADD	REVISION
70	ADD	REVISION
71	ADD	REVISION
72	ADD	REVISION
73	ADD	REVISION
74	ADD	REVISION
75	ADD	REVISION
76	ADD	REVISION
77	ADD	REVISION
78	ADD	REVISION
79	ADD	REVISION
80	ADD	REVISION
81	ADD	REVISION
82	ADD	REVISION
83	ADD	REVISION
84	ADD	REVISION
85	ADD	REVISION
86	ADD	REVISION
87	ADD	REVISION
88	ADD	REVISION
89	ADD	REVISION
90	ADD	REVISION
91	ADD	REVISION
92	ADD	REVISION
93	ADD	REVISION
94	ADD	REVISION
95	ADD	REVISION
96	ADD	REVISION
97	ADD	REVISION
98	ADD	REVISION
99	ADD	REVISION
100	ADD	REVISION

DATE: 10/10/2023
TIME: 10:00 AM
PROJECT: AIA RESIDENCE COMBINE SERVICES DRAWING TOWER TYPICAL UNIT TYPE E1 PLAN VIEW
DRAWN BY: [Name]
CHECKED BY: [Name]
APPROVED BY: [Name]



NO.	REVISION	DESCRIPTION
1	ADD	REVISION
2	ADD	REVISION
3	ADD	REVISION
4	ADD	REVISION
5	ADD	REVISION
6	ADD	REVISION
7	ADD	REVISION
8	ADD	REVISION
9	ADD	REVISION
10	ADD	REVISION
11	ADD	REVISION
12	ADD	REVISION
13	ADD	REVISION
14	ADD	REVISION
15	ADD	REVISION
16	ADD	REVISION
17	ADD	REVISION
18	ADD	REVISION
19	ADD	REVISION
20	ADD	REVISION
21	ADD	REVISION
22	ADD	REVISION
23	ADD	REVISION
24	ADD	REVISION
25	ADD	REVISION
26	ADD	REVISION
27	ADD	REVISION
28	ADD	REVISION
29	ADD	REVISION
30	ADD	REVISION
31	ADD	REVISION
32	ADD	REVISION
33	ADD	REVISION
34	ADD	REVISION
35	ADD	REVISION
36	ADD	REVISION
37	ADD	REVISION
38	ADD	REVISION
39	ADD	REVISION
40	ADD	REVISION
41	ADD	REVISION
42	ADD	REVISION
43	ADD	REVISION
44	ADD	REVISION
45	ADD	REVISION
46	ADD	REVISION
47	ADD	REVISION
48	ADD	REVISION
49	ADD	REVISION
50	ADD	REVISION
51	ADD	REVISION
52	ADD	REVISION
53	ADD	REVISION
54	ADD	REVISION
55	ADD	REVISION
56	ADD	REVISION
57	ADD	REVISION
58	ADD	REVISION
59	ADD	REVISION
60	ADD	REVISION
61	ADD	REVISION
62	ADD	REVISION
63	ADD	REVISION
64	ADD	REVISION
65	ADD	REVISION
66	ADD	REVISION
67	ADD	REVISION
68	ADD	REVISION
69	ADD	REVISION
70	ADD	REVISION
71	ADD	REVISION
72	ADD	REVISION
73	ADD	REVISION
74	ADD	REVISION
75	ADD	REVISION
76	ADD	REVISION
77	ADD	REVISION
78	ADD	REVISION
79	ADD	REVISION
80	ADD	REVISION
81	ADD	REVISION
82	ADD	REVISION
83	ADD	REVISION
84	ADD	REVISION
85	ADD	REVISION
86	ADD	REVISION
87	ADD	REVISION
88	ADD	REVISION
89	ADD	REVISION
90	ADD	REVISION
91	ADD	REVISION
92	ADD	REVISION
93	ADD	REVISION
94	ADD	REVISION
95	ADD	REVISION
96	ADD	REVISION
97	ADD	REVISION
98	ADD	REVISION
99	ADD	REVISION
100	ADD	REVISION

DATE: 10/10/2023
TIME: 10:00 AM
PROJECT: AIA RESIDENCE COMBINE SERVICES DRAWING TOWER TYPICAL UNIT TYPE E2 SECTION VIEWS 5 - 8
DRAWN BY: [Name]
CHECKED BY: [Name]
APPROVED BY: [Name]



5 SECTIONS 08 VIEW
1 : 15

B AUTODESK®
BIM 360™

Have an Autodesk ID?

[Sign In](#)

Need an Autodesk ID?

[Register](#)

[Learn more](#)

View by

Folders Sets

- Construction Stage
 - 1. Final Design Model
 - 2. BIM Documents for Reference
 - 3. MBW Contractor
 - 1. Work In-Progress (WIP)
 - 2. Shared
 - 3. Published
 - 4. Archive
 - 5. Others
 - 4. Request for Information (RFI)

Upload files Showing 7 items Search

Name	Description	Version	Size	Last updated	Updated by	Markup	Issue	RFI
1. BEP	--	--	--	May 3, 2021 10:53 AM	AVA OBC	--	--	--
2. BIM Model	--	--	--	Jul 14, 2021 9:01 PM	AVA OBC	--	--	--
3. Combine Service Drawing CSD	--	--	--	Jul 13, 2021 4:47 PM	AVA OBC	--	--	--
4. Clash Report	--	--	--	Jan 28, 2022 10:33 AM	AVA OBC	--	--	--
5. Progress Report	--	--	--	Jul 13, 2021 4:46 PM	AVA OBC	--	--	--
6.4 Wall Drawing	--	--	--	Oct 4, 2021 5:08 PM	AVA OBC	--	--	--
7. Typical Unit	--	--	--	Dec 8, 2021 10:48 AM	AVA OBC	--	--	--

Filter Search by review name, ID

Export all

Status	ID	Review name	Workflow	Initiated by	Next action by	Next action due	Documents	Approved	Rejected	
OPEN	144	Submission of Federated BIM Model & 4 Wall Dwg - Tower L8 (Common Area)	YGT & PAC (5 days) + SAA (...)	AVA OBC	PAC & Rakan-Rakan	Tomorrow	3	--	--	
OPEN	143	Submission of Federated BIM Model, 4 Wall Dwg - Tower L7 (Common Area)	YGT & PAC (5 days) + SAA (...)	AVA OBC	PAC & Rakan-Rakan	Tomorrow	3	--	--	
OPEN	142	Submission of Federated BIM Model, CSD - Tower Level 8 - Rev 0	YGT & PAC (5 days) + SAA (...)	AVA OBC	SA Architects	Jun 16, 2022	3	--	--	
CLOSED	141	Submission of Federated BIM Model, CSD - Tower Level 7	YGT & PAC (5 days) + SAA (...)	AVA OBC	--	--	3	3	0	
CLOSED	140	Submission of Federated BIM Model, 4 Wall dwg - Tower L5&L6 (Common Area) - REV03	YGT & PAC (5 days) + SAA (...)	AVA OBC	--	--	3	3	0	
CLOSED	139	Submission of Federated BIM Model, CSD - Tower Level 6 REV01	YGT & PAC (5 days) + SAA (...)	AVA OBC	--	--	3	3	0	
CLOSED	138	Submission of BIM Clash Report Zone 2 & 6 (Typical Unit Type D) - REV03	YGT (7 Days)	AVA OBC	--	--	2	2	0	
CLOSED	136	Submission of Unit Type D - Model, CSD, 4 Wall Dwg & Setting Out REV06	YGT (7 Days)	AVA OBC	--	--	5	5	0	
CLOSED	135	Submission of Federated BIM Model, CSD - Tower Level 5 REV02	YGT & PAC (5 days) + SAA (...)	AVA OBC	--	--	3	3	0	
CLOSED	134	Submission of Unit Type E - Model, CSD, 4 Wall Dwg & Setting Out REV05	SAA (7 Days)	AVA OBC	--	--	5	5	0	
CLOSED	133	Submission of Unit Type D - Model, CSD, 4 Wall Dwg & Setting Out REV05	YGT (7 Days)	AVA OBC	--	--	5	5	0	
CLOSED	132	Submission of Unit Type C - Model, CSD, 4 Wall Dwg & Setting Out REV 05	PAC (7 Days)	AVA OBC	--	--	5	5	0	
CLOSED	131	Submission of BIM Clash Report Zone 2 & 6 (Typical Unit Type D)	YGT (7 Days)	AVA OBC	--	--	2	2	0	

CLOSED #139 Submission of Federated BIM Model, CSD - Tower Level 6 REV01

Export Report | This review is closed.

Name ^	Path	Comments	Review status
AVA-BEST-ZZ-Z01-M3-V-ARCH-1001.rvt	Project Files/Construction Stage/3. MBW Contractor/2. Shared/2. BIM Model/24 - Zone 2 & 6 (Tower L6)/REV01	No comments yet.	Approved w/ co..
OBC-147-02648-CS-ARC-0059-R1.pdf	Project Files/Construction Stage/3. MBW Contractor/2. Shared/2. BIM Model/24 - Zone 2 & 6 (Tower L6)/REV01	No comments yet.	Approved w/ co..
OBC-147-AVA-CSD-0059-LEV6 REV1.pdf	Project Files/Construction Stage/3. MBW Contractor/2. Shared/2. BIM Model/24 - Zone 2 & 6 (Tower L6)/REV01	No comments yet.	Approved w/ co..

PROGRESS

Initiator Initial Review ^

AO AVA OBC May 11, 2:24 PM
 <avabimtec@orangebeam.com.my>
 Submitted to Reviewer
 Dear All,
 Please find Contractor Submission OBC/147/02648/CS/ARC/0059/R1 of Federated BIM Model & Combine Service Drawing (CSD) - Zone 2&6, Tower - Level 6 (REV01) for your approval.
 Thank you [Show more](#)


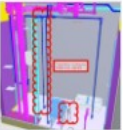
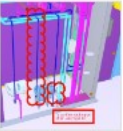
Reviewer Initial Review (2/2 submitted) v

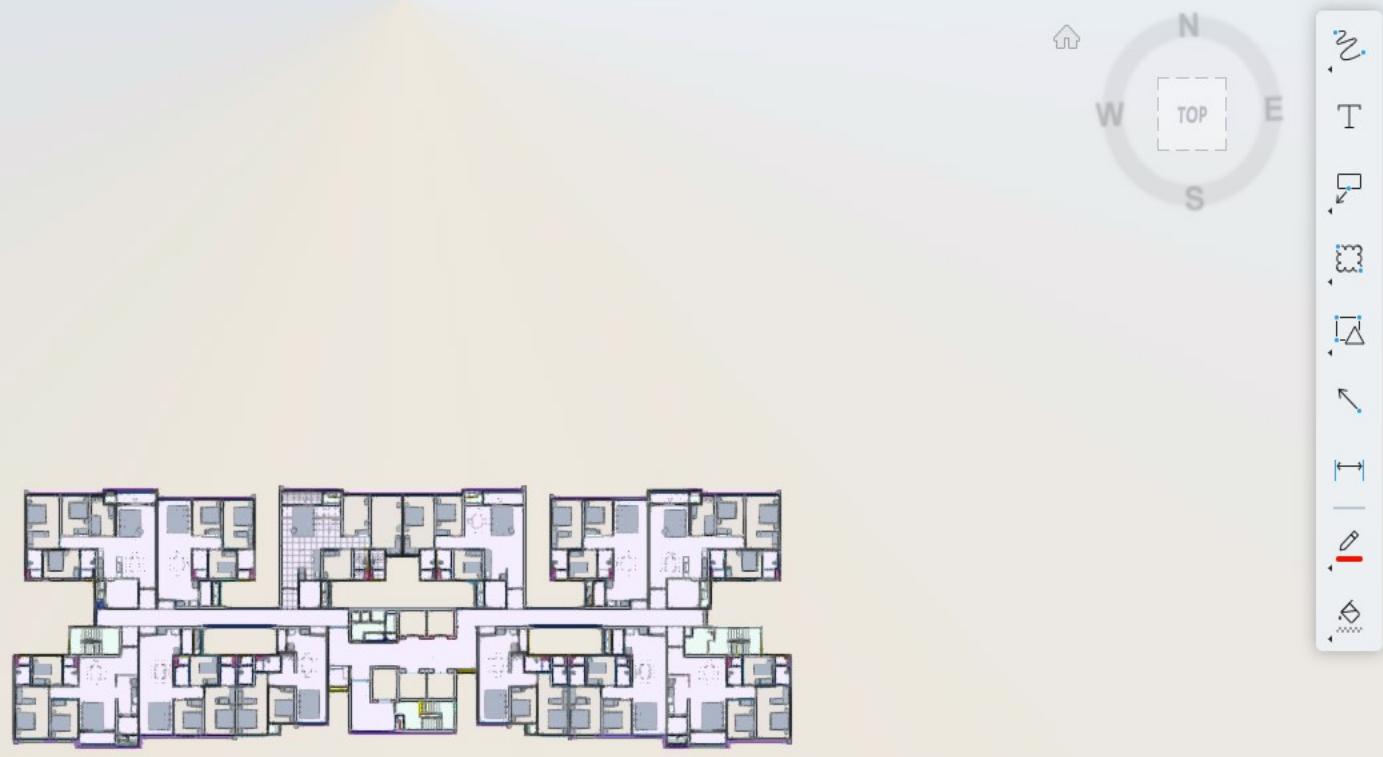
Approver Final Review ^

SA SA Architects Jun 2, 5:04 PM
 <1809kmp5@saa.com.my>
 Review ended

Markups

Filter Sort

-  **PUBLISHED**
YGT KMP5
May.13 · V1 (current)
LEVEL 6 CORRIDOR TOWER B BIM360
[Add attachments](#)
-  **PUBLISHED**
YGT KMP5
May.12 · V1 (current)
LEVEL 6 CORRIDOR TOWER B BIM360
[Add attachments](#)
-  **PUBLISHED**
YGT KMP5
May.12 · V1 (current)
LEVEL 6 CORRIDOR TOWER B BIM360
[Add attachments](#)



















MALAYSIA INTERNATIONAL FINANCIAL DISTRICT



THE EXCHANGE 106

(Southeast Asia Tallest Building – 492m)

70

Acres
Land Area

30

NUMBER OF
BUILDINGS

24 mil

Sq Ft.

TOTAL BUILDING GROSS
FLOOR AREA (GFA)

2 mil

Sq Ft.

GFA OF THE EXCHANGE MALL

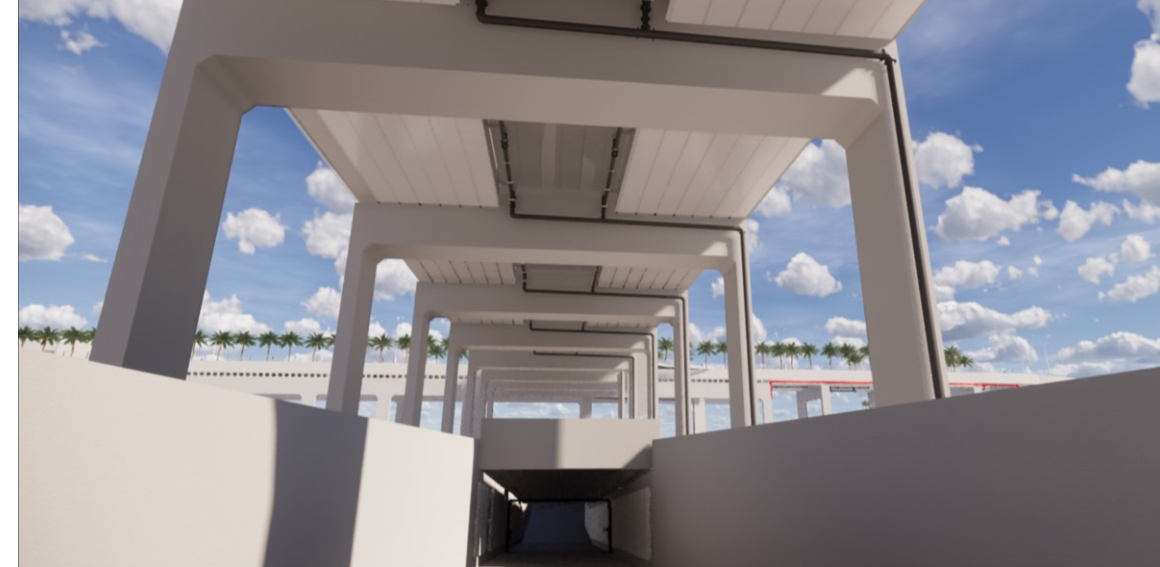
Min 22,000

Sq Ft.

OFFICE FLOOR PLATES

TRX City – Package C2 & C6B

Project Status: Construction Stage
BIM S.O.W: Project BIM modelling (LOD500) c/w asset information data



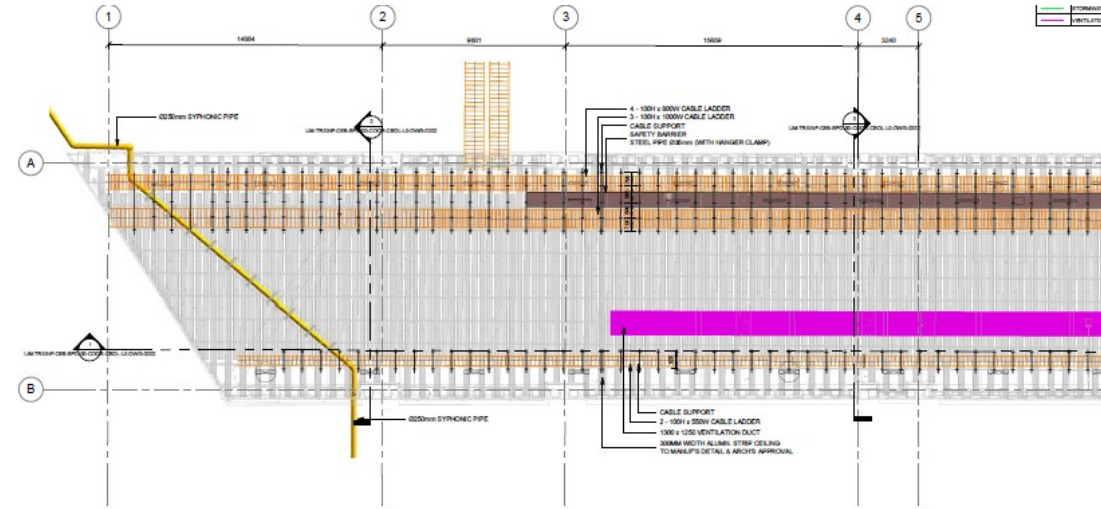
TRX City – Package C2 & C6B

Project Status:

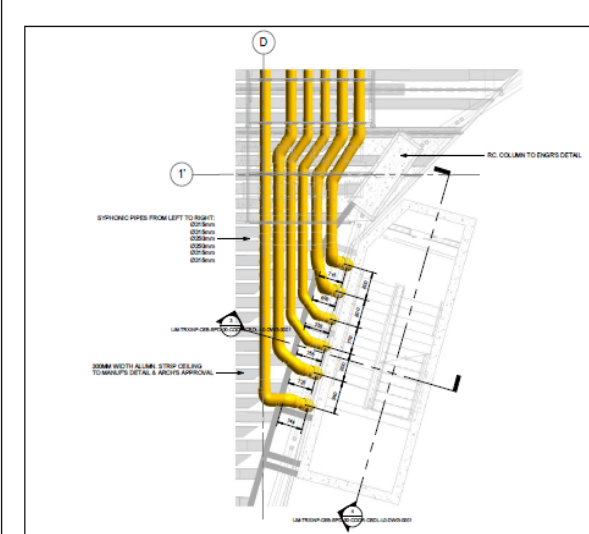
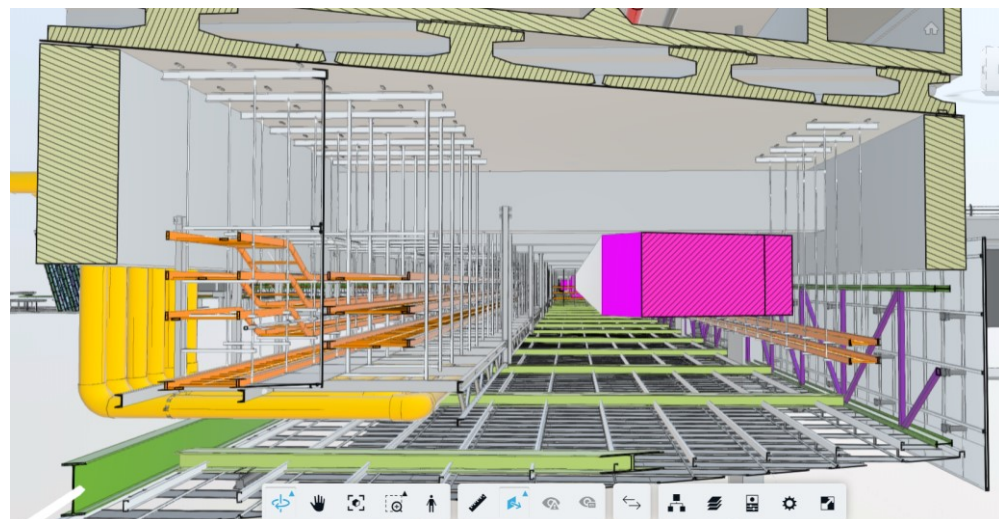
Construction Stage

BIM S.O.W:

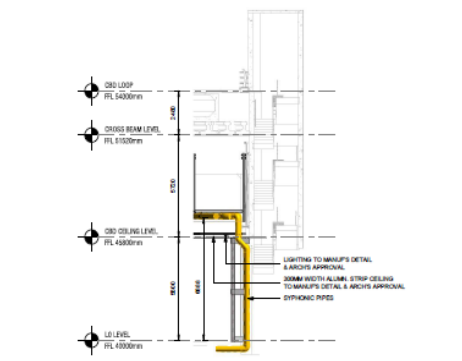
Project BIM modelling (LOD500) c/w asset information data



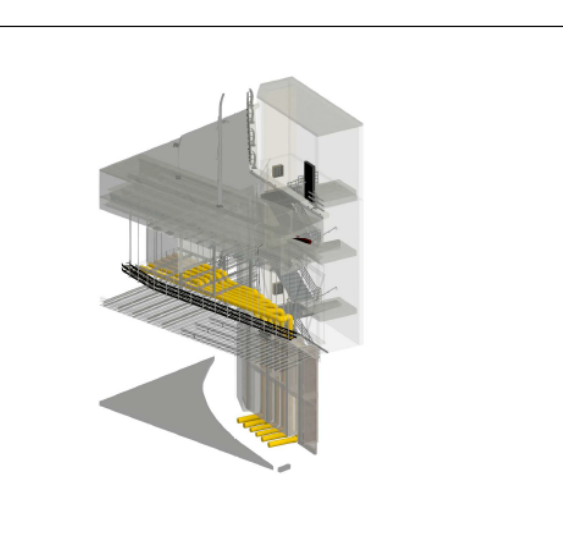
1 CBD LOOP COMBINED SERVICES DRAWING PLAN VIEW (PART 1)
UM-TRXNF-CB-SP-001-CBCL-LS-DWG-012 1:100



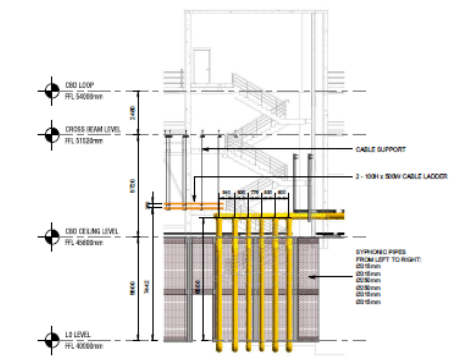
1 CBD LOOP COMBINED SERVICES DRAWING BLOW-UP
UM-TRXNF-CB-SP-001-CBCL-LS-DWG-001 1:50



1 CBD LOOP COMBINED SERVICES DRAWING SECTION VIEW 01
UM-TRXNF-CB-SP-001-CBCL-LS-DWG-001 1:100



2 CBD LOOP - ISOMETRIC VIEW @ST 34
UM-TRXNF-CB-SP-001-CBCL-LS-DWG-001



2 CBD LOOP COMBINED SERVICES DRAWING SECTION VIEW 02
UM-TRXNF-CB-SP-001-CBCL-LS-DWG-001 1:100

C6B PUBLIC REALM (PHASE 2)

PROPOSED CONSTRUCTION AND COMPLETION OF INFRASTRUCTURE, BUILDING AND PUBLIC REALM WORKS AT TUN RAKA EXCHANGE

UNTUK TITELAN TRX CITY SDN. BHD.

165 CITY SERVICES (PHASE 2)
165 City Services Project
2024 Tun Raka Exchange
4000000000
Tel No. 03-2715 1818
Fax No. 03-2715 1813

TRX

GDP ARCHITECTS SDN BHD
17-18, Jalan Permatang 13
80000 Johore Bahru
80000 Johore Bahru
Tel No. 07-358 8888
Fax No. 07-358 8881

GDP

ADCOM CONSULTING GROUP SDN BHD
24-1, Jalan 10/101
10100 Kajang, Selangor
43000 Kajang
Tel No. 03-892 1010
Fax No. 03-892 1011

ADCOM

J&M SDN BHD
Level 1, Block 100
11, Jalan 10/11, Medan Damansara
47000 Petaling Jaya, Selangor
Tel No. 03-750 0000
Fax No. 03-750 0001

J&M

LANGSAT DESIGN SDN BHD
120-11, Jalan Damansara
50490 Kuala Lumpur
Tel No. 03-209 1000
Fax No. 03-209 1001

LANGSAT

UM CONSTRUCTION SDN BHD
Block A, Jln. Alam, Tunjaya, Kuala Lumpur
Tel No. 03-209 1000
Fax No. 03-209 1001

IJM

PLYTEC Engineering
808 Engineering Station 4 Technology 500-808
No. 10, Jalan 10/101, Medan Damansara
47000 Petaling Jaya, Selangor
Tel No. 03-750 0000
Fax No. 03-750 0001

PLYTEC

COMBINED SERVICES DRAWING

Drawing Title
CBD LOOP COMBINED SERVICES DRAWING @ST34

Rev. No.	Date	Description
REV 01	08/08/2024	ISSUE FOR CONSTRUCTION

1:100

SHOP DRAWING

UM-TRXNF-CB-SP-001-CBCL-LS-DWG-001

Our Clients

exyte

tialoc

IAQ

MEINHARDT

POLYCOOL HTE ENGINEERING SDN. BHD.



ORANGE BEAM



BUILDING LIFE,
INSPIRING POSSIBILITIES.

Hospital Pakar
METRO
Specialist Hospital



Aurel
sanctuary



CONSULTING ENGINEERS



SMHB Sdn Bhd 63281-X
Jurutera Perunding • Consulting Engineers

RECOGNITION

PLYTEC engineering
A Member of PLYTEC Group

ARCHIDEX STAR AWARD WINNER '21 | **ARCHIDEX STAR AWARD INDUSTRY CHOICE 2021**

BIM Field Verification / LiDAR Scan to BIM

LOD500 BIM MODEL | **POINT CLOUDS**

BUILD SMARTER. BUILD FASTER.

bsi
Building Smart Institute
11010011 and 11010012

ARCHIDEX ONLINE

ARCHIDEX STAR AWARD

INDUSTRY CHOICE '21

Product Name
LIDAR SCAN TO BIM

Submitted by
BIM ENGINEERING SOLUTION & TECHNOLOGY SDN BHD

ARCHIDEX

Jointly Organised By
PAM | **CIS**

DATUK AR. EZUMI HARZANI
PRESIDENT
MALAYSIAN INSTITUTE OF ARCHITECTS (PAM)

DATO' VINCENT LIM
PRESIDENT
C.I.S NETWORK SDN BHD



BIM Engineering Solution & Technology Sdn Bhd
No. 19 Jalan Meranti Permai 3,
Meranti Permai Industrial Park,
Batu 15, Jalan Puchong,
47100 Puchong,
Selangor Darul Ehsan

To whom it may concern
Re: Testimonial For LIDAR Scan to BIM - T

We have engaged BIM Engineering Solution to produce the as-built BIM model of Package C2. It was a great challenge to produce accurate and extended construction period. Changes were of build.

PLYTEC Engineering deployed LIDAR scan georeferenced digital point clouds that truly represent data were referenced to produce accurate and de

PLYTEC Engineering team is proactive and co-ordinating their BIM solutions. The team has set a high standard for innovative data control and managemen



Our ref. : AL/PHGC
Date : 17th Mar

BIM Engineering Solution (t
No.19 Jalan Meranti Permai
Meranti Permai Industrial Pa
47100 Puchong
Selangor D.E.

Dear Sirs,

RE: Letter of Commendati

We engaged PLYTEC Eng
implementation of cloud bas
19650 -1 & -2.2018 for ou
Bentong, Pahang Darul Mak

PLYTEC Engineering scope
to produce accurate LOD 5
dataset upon completion and

Their scope of works invol
based on design CAD di
coordination meetings to re
improve spatial management
design review (VDR), walkt
transforms communication c
with transparency. With CDE
easily trackable and accessi
of project performance dash

We even shared our 3D
Nominated Sub-Contractors
constructability of our built
Quantities extraction from
tenders) to compare an
Surveyors before award of c

ORANGEBEAM (198601009161)
ORANGEBEAM Construction Sdn Bhd
No. 5, Jalan P16, Precinct 16, 62150 Putrajaya,
www.orangebeam.com.my | Tel : +603.8669.8888 | Fax : +603.8669.5666



VSB-062020-019A
Date : 23rd June 2020

BIM Engineering Solution & Te
No. 19 Jalan Meranti Permai 3,
Meranti Permai Industrial Park,
Batu 15, Jalan Puchong,
47100 Puchong,
Selangor Darul Ehsan

To whom it may concern

Re: Letter of Commendation

I would personally like to apgr
your project team has put int
modelling of Olympic Council
North Port Klang Office.

LIDAR scanner enables capal
depth 3D point clouds up to 1m
data, creation of digital replic
made seamless. The pairing of
of data and monitoring of syste
cost, increases business produ

PLYTEC Engineering's team i
reliable and accurate inform
heartly congratulations to yo
forward to collaborate with your



KERJAYA PROSPEK (M) SDN. BHD.
(52340731)
No. 1, Jalan Wangsa Permai, 3rd Floor, Bangunan One Wangsa, Taman Wangsa Permai
52200 Kuala Lumpur. Tel: 603-6277 5192 (Hunting Line) Fax: 603-6277 5443/5772

BIM Engineering Solution & Technology Sdn Bhd
No. 19 Jalan Meranti Permai 3,
Meranti Permai Industrial Park,
Batu 15, Jalan Puchong,
47100 Puchong,
Selangor Darul Ehsan

To whom it may concern

Re: Testimonial for BIM Se

It is with great pleasure t
Solution & Technology Sdr
BIM Engineering Solution & Technology Sdn Bhd
No. 19 Jalan Meranti Permai 3,
Meranti Permai Industrial Park,
Batu 15, Jalan Puchong,
47100 Puchong,
Selangor Darul Ehsan



HOSPITAL PAKAR METRO
新世纪专科医院
Wholly Managed By METRO KURNIA SDN. BHD. [199201012295] (243758-M)
1, Lorong Metro, 26000 Sungai Petani, Kedah Darul Aman.
Tel: 04-4238888 Fax: 04-4234848
http://www.hospitalmetro.com E-mail: metro@hospitalmetro.com

BIM Engineering Solution & Technology Sdn Bhd
No. 19 Jalan Meranti Permai 3,
Meranti Permai Industrial Park,
Batu 15, Jalan Puchong,
47100 Puchong,
Selangor Darul Ehsan
2021

To whom it may concern

Re: Letter of Commendation

We have had bad experiences with conventional design approach using 2D CAD drawings during construction of previous phase of Metro Specialist Hospital. Considerable amount of design conflicts and clashes were inherited from design into construction which had resulted in considerable amount of variation works, abortive works and delayed deliverables.

Therefore, we decided to embark into BIM workflow to manage design and coordination of expansion of our hospital. BIM Engineering Solution and Technology Sdn Bhd (also known as "PLYTEC Engineering") leads integration of BIM workflow and together with the design team, the expansion was modelled into a real scaled 3D visualization BIM models. These models provide comprehensive visibility to all stakeholders and the team managed to resolve conflicts/clashes and optimize spatial management of M&E services as early during design stage

We certainly recommend PLYTEC Engineering to integrate their BIM solutions on other new projects especially for hospital project where MEP services are much more complex.

Yours sincerely

Dr. Tneoh Shen Jen
Director
DR. TNEOH SHEN JEN
EXECUTIVE DIRECTOR
DR. TNEOH SHEN JEN
EXECUTIVE DIRECTOR

Knowing Caring Serving

Specialist of Prefabrication Construction



Our ref.: PCFI-BIM-2020-017
Date : 15th July 2020

BIM Engineering Solution & Technology Sdn Bhd
No. 19 Jalan Meranti Permai 3,
Meranti Permai Industrial Park,
Batu 15, Jalan Puchong,
47100 Puchong,
Selangor Darul Ehsan

BIM Engineering Solution & Technology Sdn Bhd
No. 19 Jalan Meranti Permai 3,
Meranti Permai Industrial Park,
Batu 15, Jalan Puchong,
47100 Puchong,
Selangor Darul Ehsan

To whom it may concern

Re: Testimonial for BIM Se

It is with great pleasure t
Solution & Technology Sdr
BIM Engineering Solution & Technology Sdn Bhd
No. 19 Jalan Meranti Permai 3,
Meranti Permai Industrial Park,
Batu 15, Jalan Puchong,
47100 Puchong,
Selangor Darul Ehsan

Dear Sir,

Cadangan Pembangunan 2 Blok 43 Tingkat Pangsapuri 5 Yang Mengandungi:
I. A) Blok A - 43 Tingkat (435 Unit)
B) Blok B - 43 Tingkat (435 Unit)
C) 11 Tingkat Ruang Pembaikan Di Aros Tanah (11 Unit)
D) 11 Tingkat Kemudahan Penduduk Di Tingkat 2
II. A) 8 Tingkat Blok Tempat Letak Kereta Dan 1 Tingkat B) Ruang Rekreasi Di Aros Bumbung Blok Tempat Letak Diatas Lot P2 24490 (Plot 5), Mukim Batu, Daerah Kuala Lumpur Untuk Tuhjan Mega Legacy (M) Sdn Bhd

To whom it may concern

Re: Letter of Commendation

We have had bad experiences with conventional design approach using 2D CAD drawings during construction of previous phase of Metro Specialist Hospital. Considerable amount of design conflicts and clashes were inherited from design into construction which had resulted in considerable amount of variation works, abortive works and delayed deliverables.

Therefore, we decided to embark into BIM workflow to manage design and coordination of expansion of our hospital. BIM Engineering Solution and Technology Sdn Bhd (also known as "PLYTEC Engineering") leads integration of BIM workflow and together with the design team, the expansion was modelled into a real scaled 3D visualization BIM models. These models provide comprehensive visibility to all stakeholders and the team managed to resolve conflicts/clashes and optimize spatial management of M&E services as early during design stage

We certainly recommend PLYTEC Engineering to integrate their BIM solutions on other new projects especially for hospital project where MEP services are much more complex.

Yours sincerely

Dr. Tneoh Shen Jen
Director
DR. TNEOH SHEN JEN
EXECUTIVE DIRECTOR
DR. TNEOH SHEN JEN
EXECUTIVE DIRECTOR

“BIM”


DIGITAL
TRANSFORMATION

Thank You

for your awesome review!
We have jointly deliver benefits
of BIM

Thank You

 Ir. Samantha Lau

 +6012-603 2822

 samantha@plytec.com.my

 <https://www.plytecengineering.com>



Organized by



Establish Member of



malaysiaGBC
Platinum Partner 2021/2022



malaysiaGBC
Silver Partner 2021/2022

