

**BUILDING
BETTER
TOGETHER**

Helping Malaysia Build Greener

Presented by:
**Head of Sustainability, YTL Cement
Clarisse Loh**

18 August 2022

A collaboration with



SELAMAT DATANG

WELCOME



祥興



1985

Connecting Penang island and mainland



1998-2004
Tallest twin
buildings in the world





2007

**The longest stormwater
drainage tunnel in
Southeast Asia**



2017
Connecting Malaysians in
Greater Kuala Lumpur

An aerial view of a city skyline, featuring the Petronas Towers and other skyscrapers. In the foreground, there is a large green park with a blue water feature. The sky is blue with white clouds.

BUILDING TOGETHER

Icons, homes and dreams

YTL Cement Group is a building materials leader with a wide network of operations in Malaysia

- Fully integrated operations across entire value chain in Malaysia
- Largest cement producer with the most comprehensive network of operations
- Largest ready-mixed concrete producer
- Largest quarry construction aggregates producer
- Largest drymix business
- Leader in co-processing industry

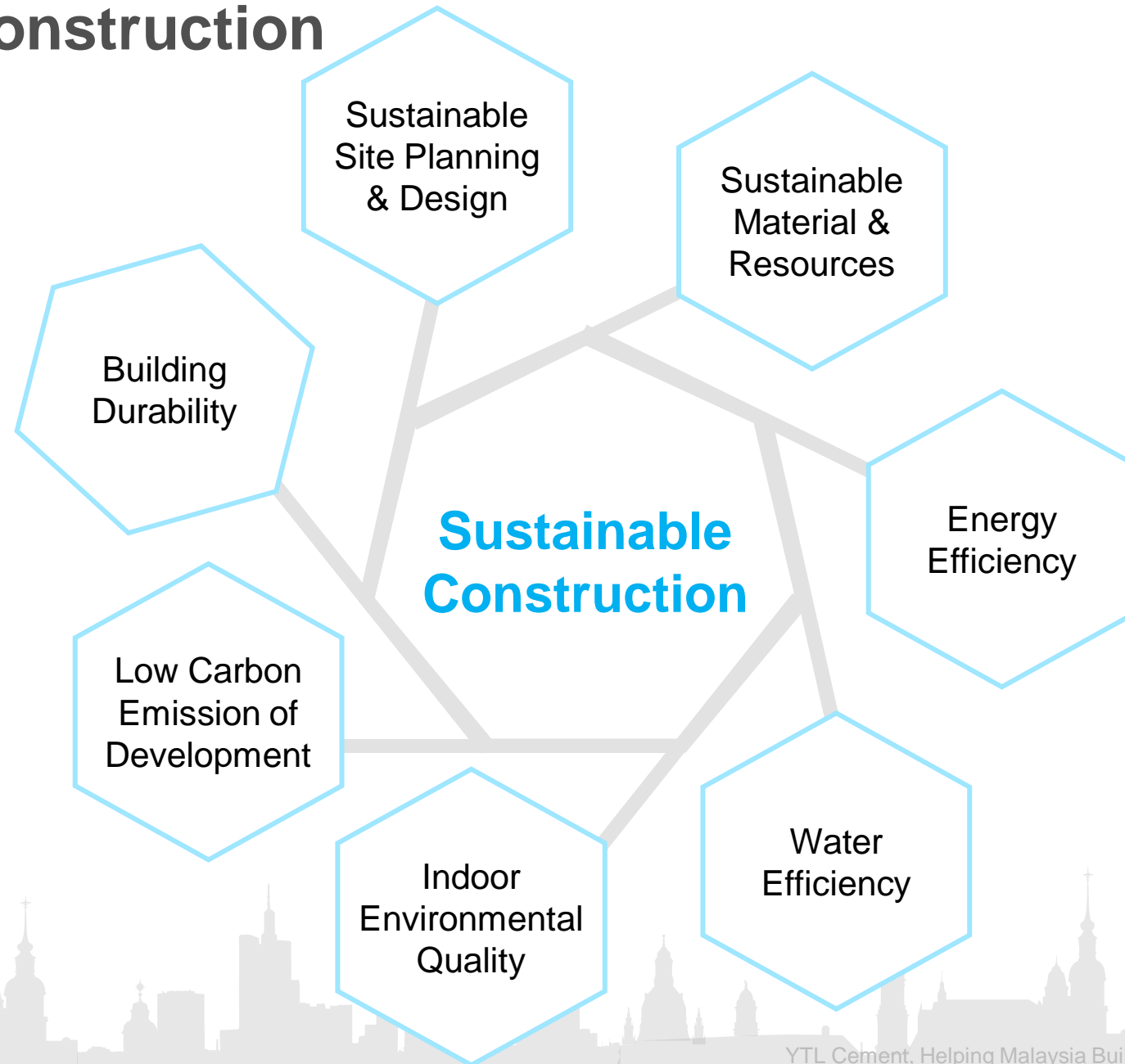


Sustainable Construction

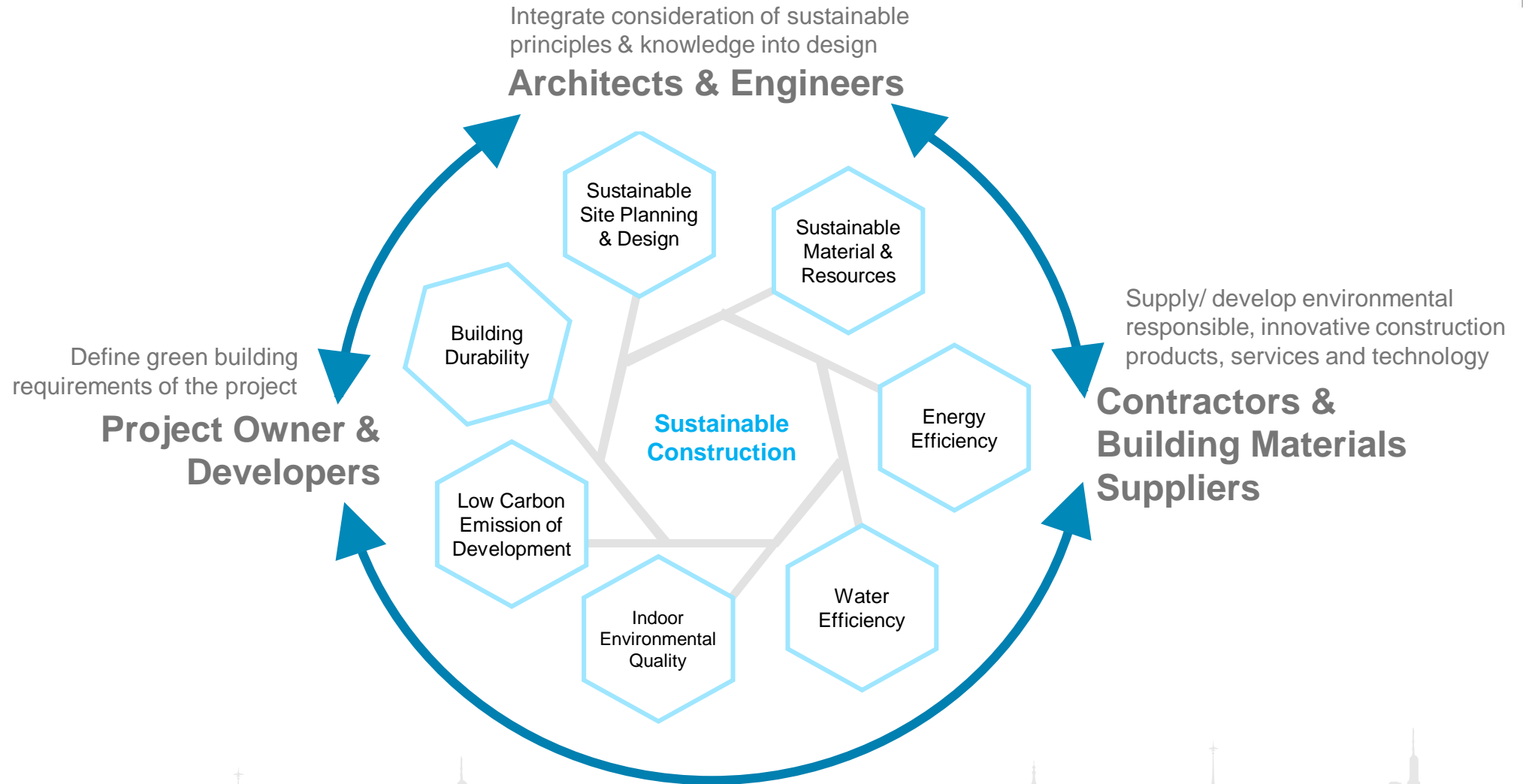


Source: WGBC

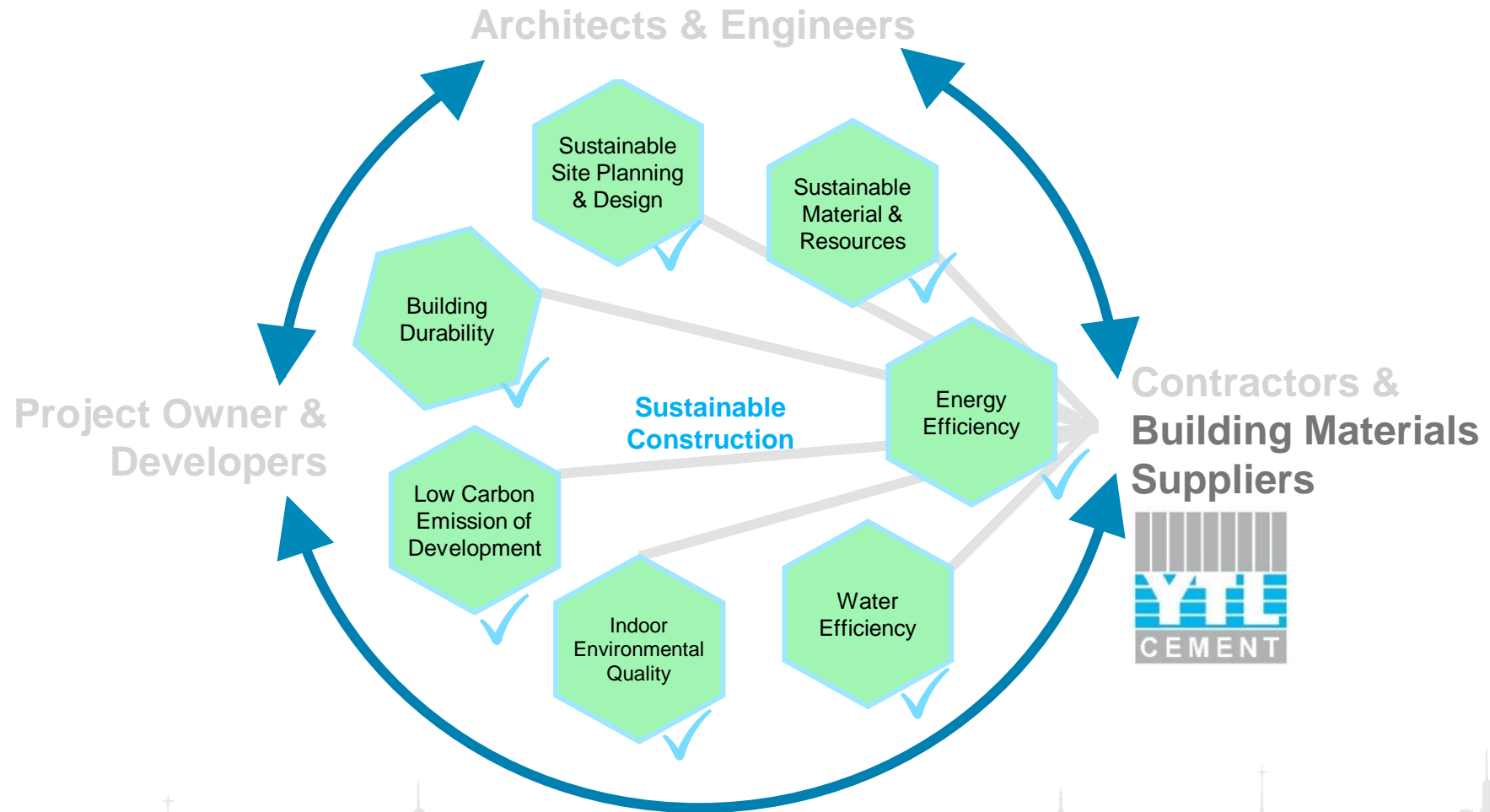
Sustainable Construction



Our Roles in Sustainable Construction



YTL Cement supports Sustainable Construction in all aspects



HOW DO WE ACHIEVE THAT?

Helping Malaysia Build Greener through...



Sustainable Operation



Sustainable Operation

Our commitment to operating sustainably starts from the first step in cement production – from our quarry, all the way through our operations.



- Quarry plan
- Biodiversity management



- Resource recovery
- Energy efficiency



- Compliance to environmental regulations



- Responsible waste management

Helping Malaysia Build Greener through...



Low Carbon Products

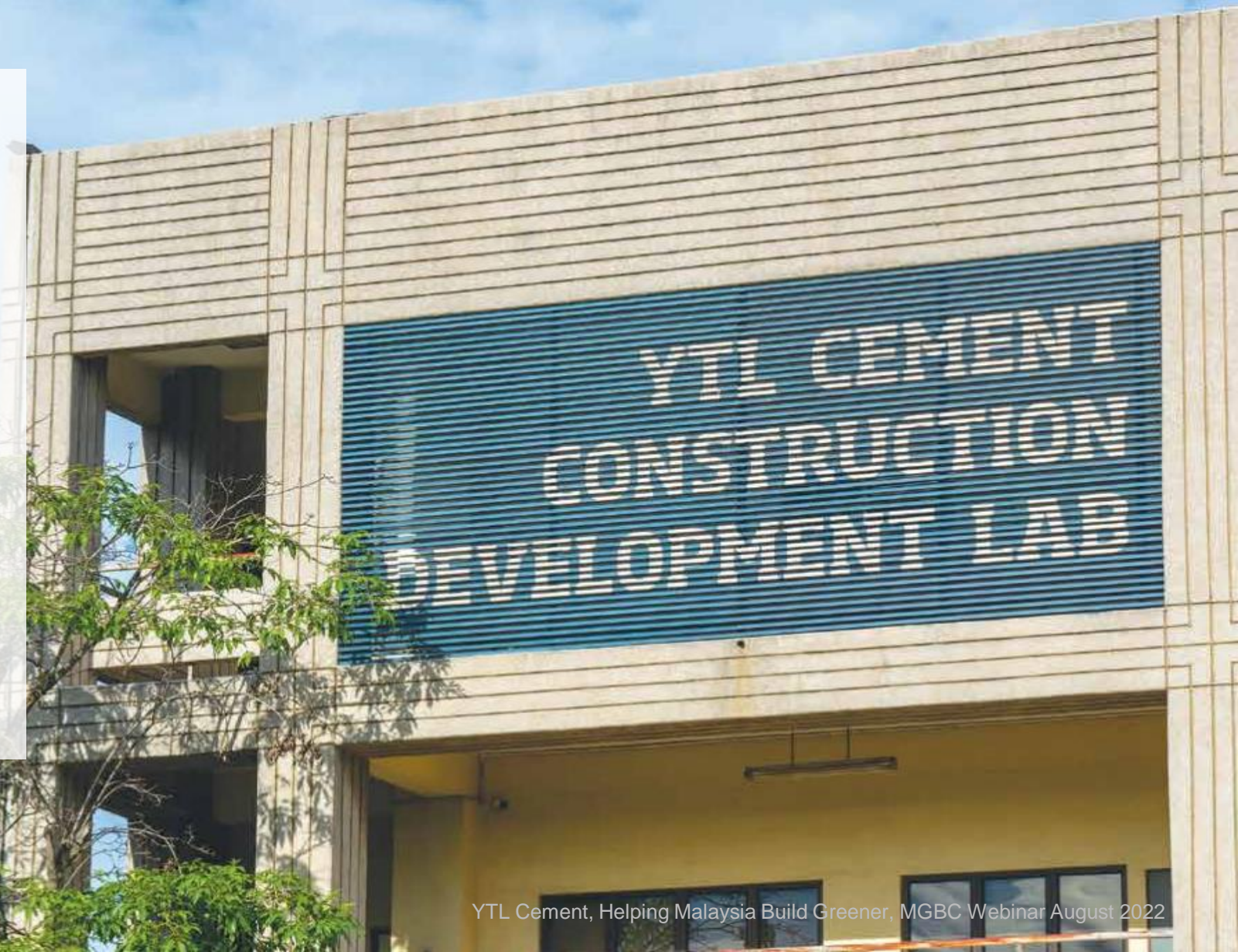


Green Products & Services



YTL Cement Construction Development Laboratory (CDL)

- ISO/IEC 17025 accredited
- State-of-the-art building materials lab with cement, concrete, aggregate and soil labs.
- Research & development
- We work closely with our customers to test, adapt and tailor innovative solutions for their construction needs.



YTL Cement **Eco Family** Product Lines



EcoCem

Our environmentally friendly alternative to Ordinary Portland Cement.



EcoConcrete

Our environmentally friendly alternative to conventional ready-mixed concrete.



EcoSand

Our environmentally friendly alternative to natural sand as fine aggregate.

Our Green Cement



Sustainable alternatives to OPC

CEM II and CEM IV low carbon cement



Minimum 25% recovered material content

Lower clinker content



Lower CO₂ emission per ton cement

20% to 50% lower CO₂ compared to OPC



Resource efficient production

Lower energy consumption and reduced use of natural resources



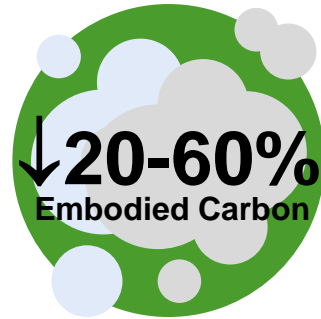
Certified by SIRIM Eco Label / Singapore Green Label



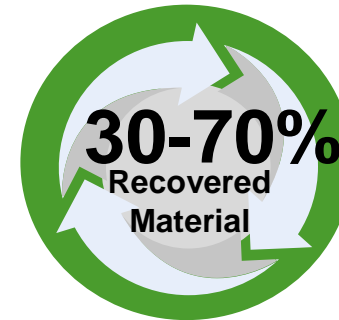
Our Green Concrete with lower carbon footprint



- YTL Cement's low carbon ready-mixed concrete range, available in different mixes & strengths.



- Reduce embodied carbon vs CEM I
- **Low Carbon Series:** 20-30% lower embodied carbon
- **Ultra Series:** Ultra Low Carbon for 40-60% lower embodied carbon



- Contribute to resource reuse and recycling
- Reduce use of virgin materials



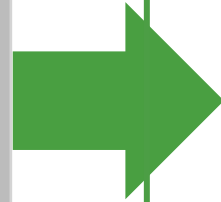
- Go one notch higher in sustainability performance with EcoSand.
- Our proprietary production method produces alternative sand that delivers superior performance like no other.
- Our solutions team is ready to assist to our customers to replace up to 100% of natural sand in concrete mix.

Preserving Natural Resource with EcoSand



Uncontrolled natural sand mining comes at a cost

- Destruction of ecosystem
- Riverbed erosion
- Risk of fuel spill into river and lake



Our solution?

**eco
SAND**



Preserving Natural Resource with EcoSand



Quality x Sustainability with EcoSand

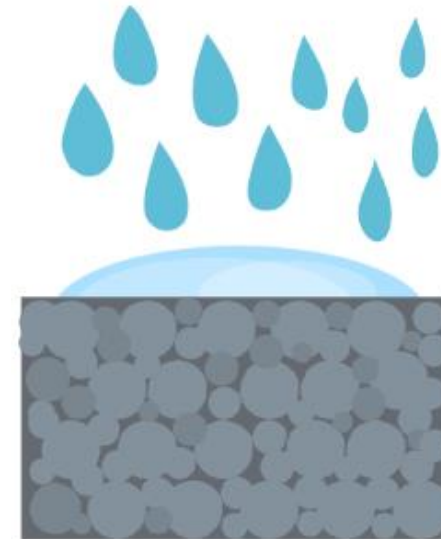
- ✓ Superior particle shape, consistent size distribution
- ✓ Strong and durable. No organic impurities
- ✓ Colour uniformity
- ✓ Excellent surface finishing. Consistency in grading and higher percentage of fines
- ✓ Energy efficient production process
- ✓ Avoid need for natural sand extraction
- ✓ Prevent pollution to water body



AESTHETIC X FUNCTIONALITY

for your next green building

Common concern : Stormwater management



Impervious concrete

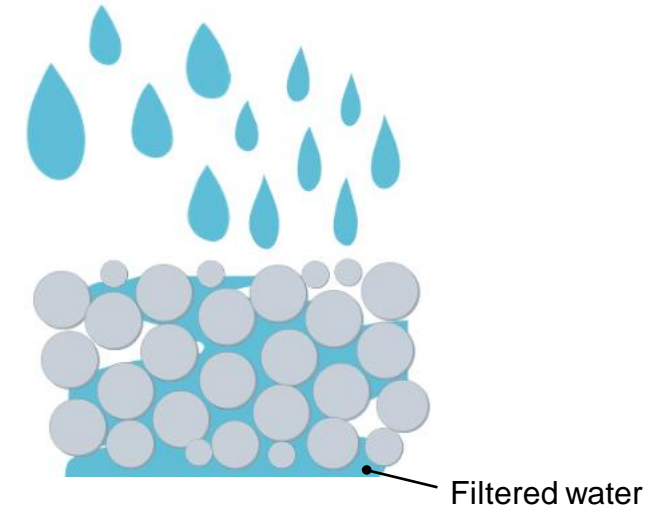
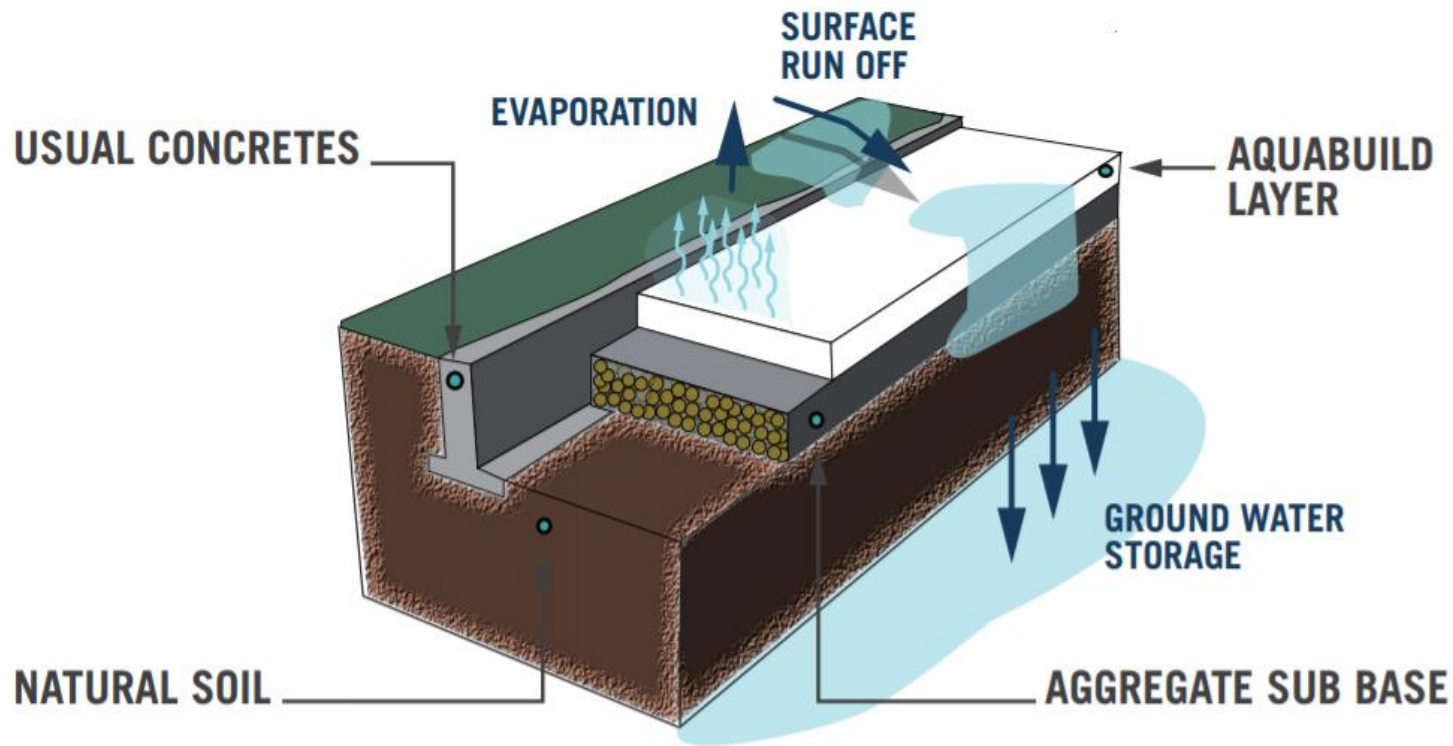
Water cannot seep through conventional concrete ground.

Aesthetic x Functionality

Aqua ❖ Build



Efficient stormwater management & rainwater harvesting



- ✓ Allows rainwater to flow right through
- ✓ Prevents water ponding
- ✓ Prevents slippery surface
- ✓ Good for rainwater harvesting

Securing GBI Points With AquaBuild

- Increase pervious cover area
- Increase on-site infiltration
- Eliminate pollutants from stormwater runoff

SM11 (1 Point)

Stormwater Design –
Quantity & Quality
Control

- Increase quantity of rainwater collection
- Harvest road surface runoff

WE1 (2 Points)

Rainwater Harvesting



Medan Tuanku, Kuala Lumpur



Taman Tasik Keramat, Kuala Lumpur

Aesthetic x Functionality

Aqua ❄️ Build

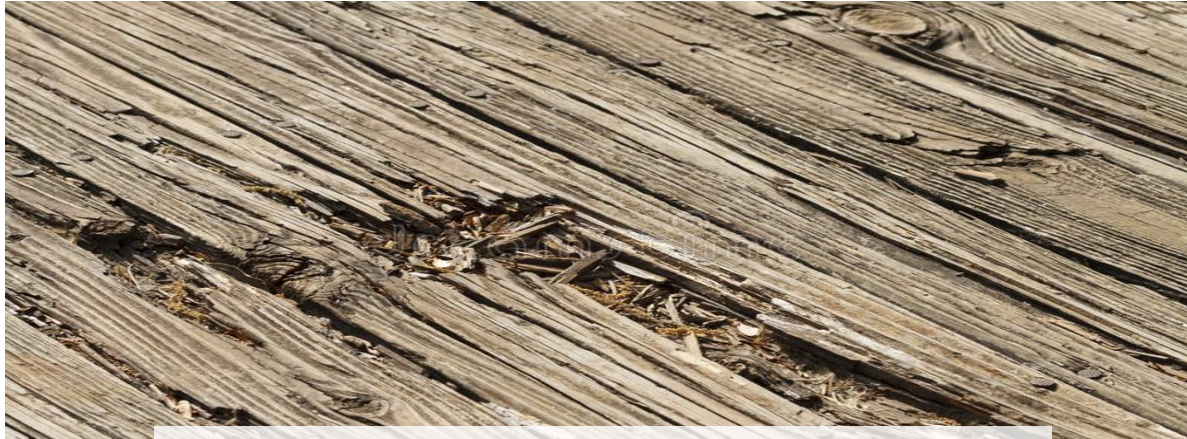


Anggun City, Rawang

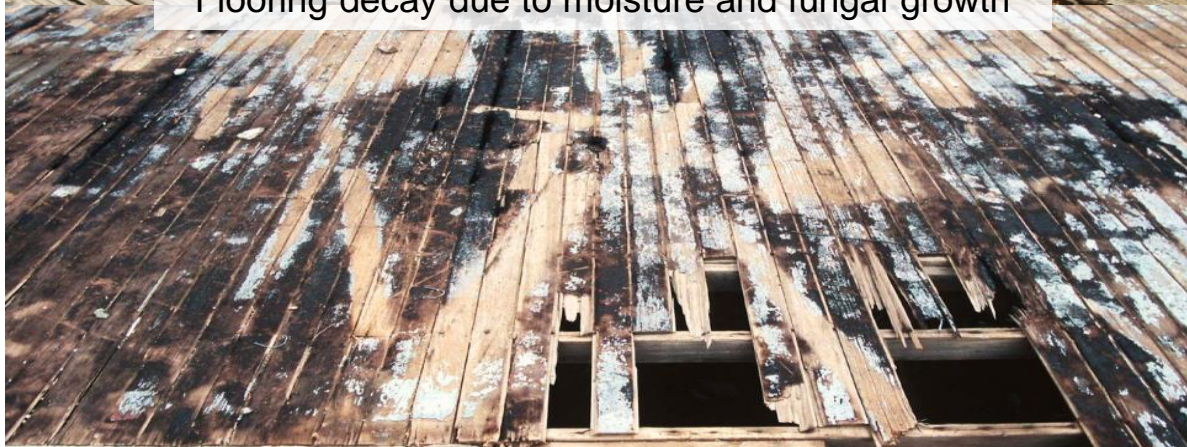


Setia Temasya, Glenm

Common concern: Maintenance of built environment



Flooring decay due to moisture and fungal growth



Weed and moss growth between the joints



Aesthetic x Functionality

Deco  Build



DecoBuild



Highly durable concrete with aesthetically desirable design, textures and colours

- ✓ Long service life
- ✓ Low maintenance
- ✓ Freedom of design
- ✓ A part of the passive solar design - high SRI
- ✓ Offers a permanent colouring

Typical Service Life of outdoor flooring:

Wood
10-15 years

Concrete
Up to 30 years

- Within a floor's typical design life (30 years), you might have already replaced your wooden flooring 2 to 3 times more than DecoBuild flooring, which could last as long as the design life.
- Minimal maintenance with DecoBuild compared to other types of flooring.



Taman Titiwangsa, Kuala Lumpur



Shaftsbury Square, Cyberjaya



**Aesthetic x
Functionality**
Deco  **Build**

Aesthetic x Functionality

Flow  Build Pro

Our self-compacting concrete
that require the least vibration
for compacting





Lower energy consumption



Reduces labour dependency



Faster construction time



Produce flat, smooth and superior finishes



Lower noise level



Allows construction to continue through the night

Helping Malaysia Build Greener through...



Capacity Building



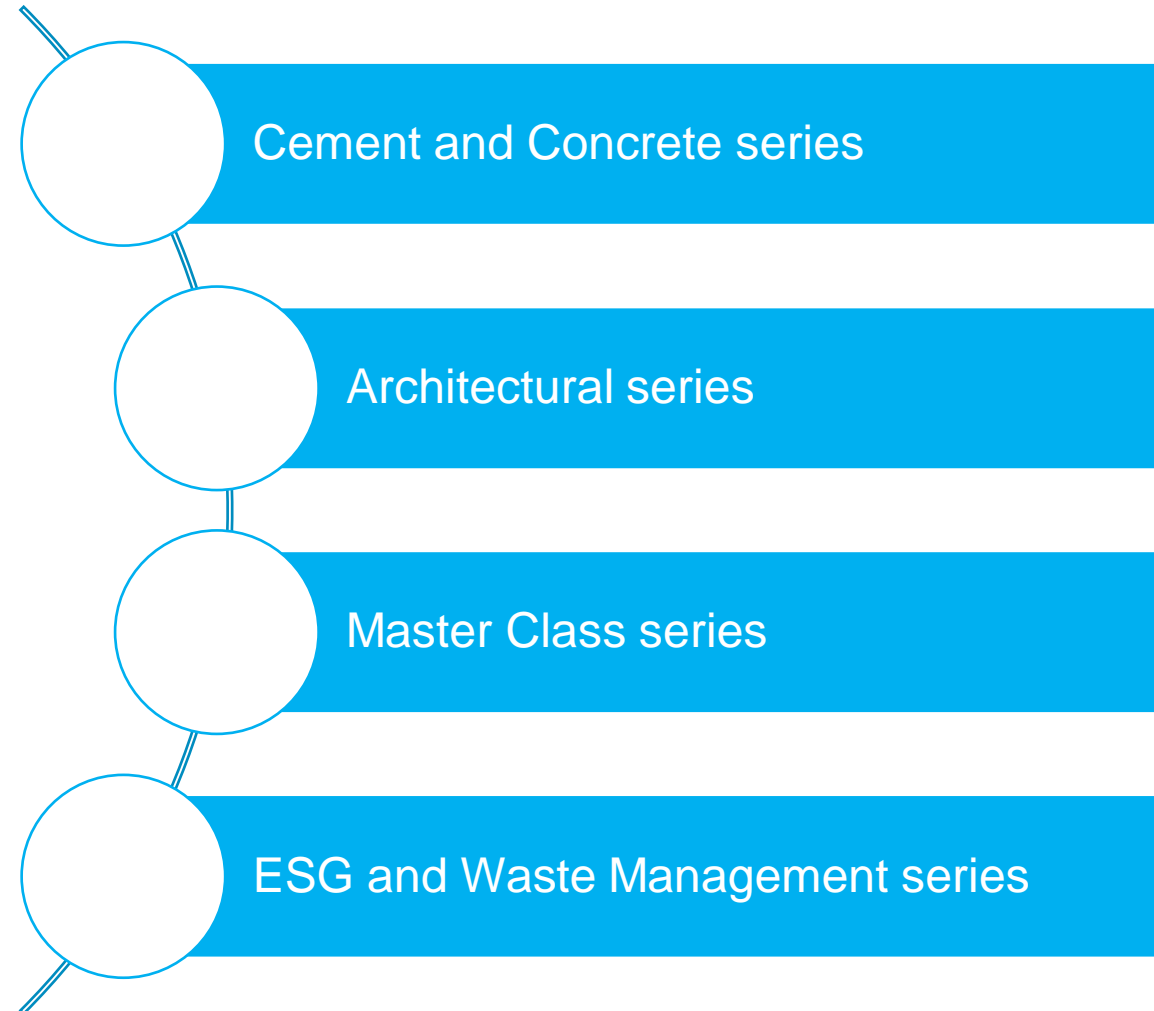
Capacity Building



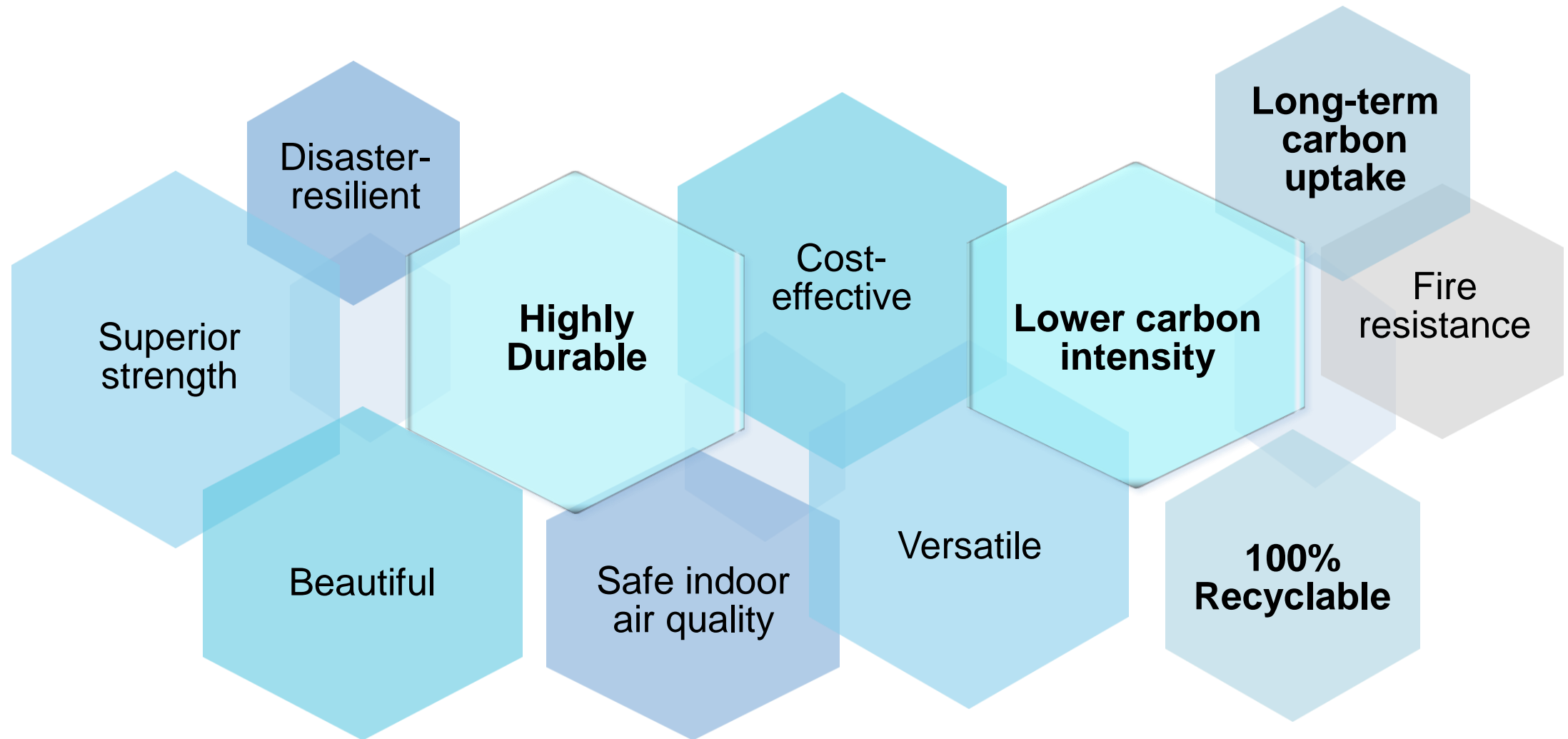
**BUILDING
BETTER
TOGETHER**

**VIRTUAL
SEMINAR
SERIES**

Capacity Building



Sustainability lies within concrete



A wide-angle photograph of a modern city skyline at sunset. The sky is filled with soft, orange and yellow clouds, transitioning into a clear blue at the top. The city features numerous skyscrapers with glass facades, some reflecting the warm light. In the foreground, a large, vibrant green lawn is visible, and a calm body of water perfectly reflects the entire scene above. The overall atmosphere is serene and harmonious, suggesting a balance between urban development and nature.

**BUILDING
TOGETHER**

Thank You

clarisse.loh@ytlcement.com.my

BUILDING
BETTER
TOGETHER

